

## CERS3 RABBIT PAB

货号: S214444

产品全名: CERS3 兔多抗

基因符号: ARCI9; LASS3

**UNIPROT ID:** Q8IU89 (Gene Accession - NP\_849164)

**背景:** This gene is a member of the ceramide synthase family of genes. The ceramide synthase enzymes regulate sphingolipid synthesis by catalyzing the formation of ceramides from sphingoid base and acyl-coA substrates. This family member is involved in the synthesis of ceramides with ultra-long-chain acyl moieties (ULC-Cers), important to the epidermis in its role in creating a protective barrier from the environment. The protein encoded by this gene has also been implicated in modification of the lipid structures required for spermatogenesis. Mutations in this gene have been associated with male fertility defects, and epidermal defects, including ichthyosis. Alternative splicing results in multiple transcript variants encoding different isoforms.

**抗原:** Synthetic peptide of human CERS3

**经过测试的应用:** ELISA, WB, IHC

**推荐稀释比:** IHC: 50-200;WB: 1000-5000;ELISA: 5000-10000

**种属反应性:** Rabbit

**克隆性:** Rabbit Polyclonal

**亚型:** Immunogen-specific rabbit IgG

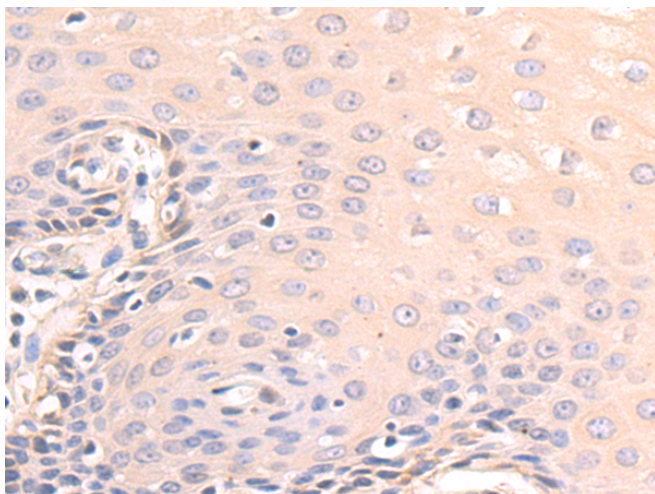
**纯化:** Antigen affinity purification

**种属反应性:** Human, Mouse

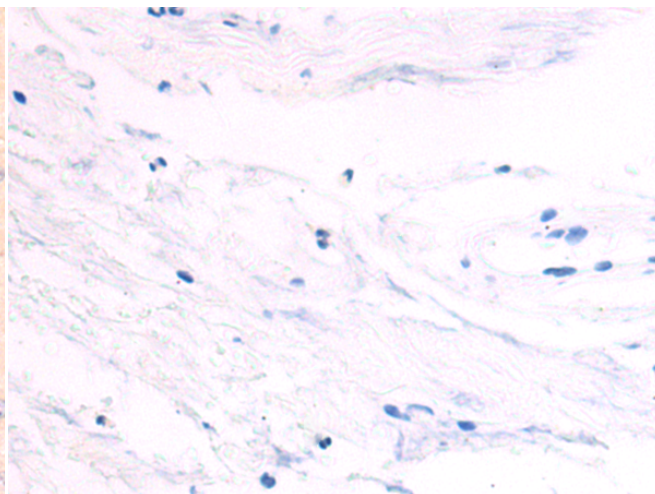
**成分:** PBS (without Mg<sup>2+</sup> and Ca<sup>2+</sup>), pH 7.4, 150 mM NaCl, 0.05% Sodium Azide and 40% glycerol

**研究领域:** Metabolism, Cancer, Cell Biology

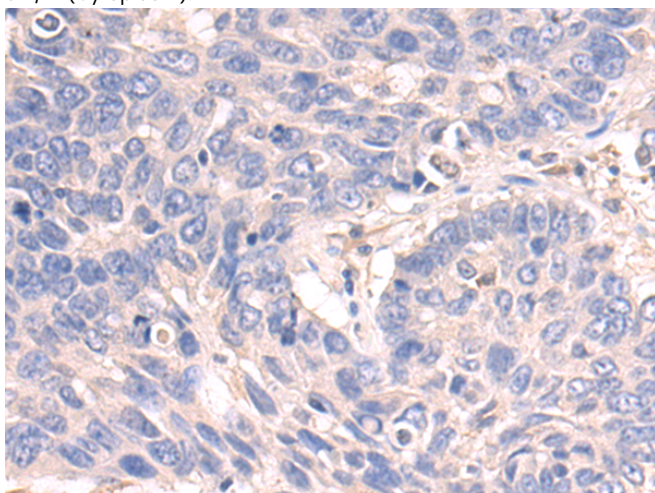
**储存和运输:** Store at -20°C. Avoid repeated freezing and thawing



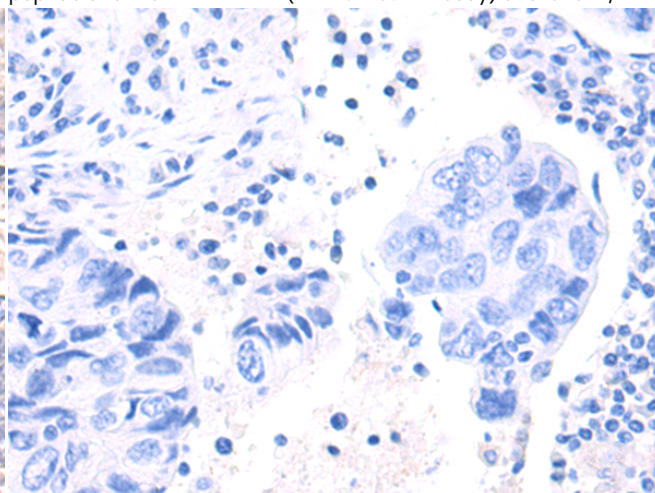
Immunohistochemistry analysis of paraffin embedded Human esophagus cancer tissue using 214444(CERS3 Antibody) at a dilution of 1/50(Cytoplasm).



In comparison with the IHC on the left, the same paraffin-embedded Human esophagus cancer tissue is first treated with the synthetic peptide and then with 214444(Anti-CERS3 Antibody) at dilution 1/50.



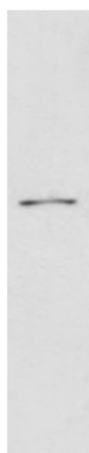
The image on the left is immunohistochemistry of paraffin-embedded Human lung cancer tissue using 214444(Anti-CERS3 Antibody) at a dilution of 1/50.



In comparison with the IHC on the left, the same paraffin-embedded Human lung cancer tissue is first treated with synthetic peptide and then with D161848(Anti-CERS3 Antibody) at dilution 1/50.

kDa

130 —  
100 —  
70 —  
55 —  
35 —  
25 —  
15 —



Gel: 8%SDS-PAGE, Lysate: 40 µg;  
Lane: Mouse small intestines tissue lysate;  
Primary antibody: 214444(CERS3 Antibody) at dilution 1/1000;  
Secondary antibody: HRP-conjugated Goat anti rabbit IgG at 1/5000 dilution;  
Exposure time: 40 seconds



# Product Description

Pioneering GTPase and Oncogene Product Development since 2010

---