

CER1 RABBIT PAB

货号: S218475

产品全名: CER1 兔多抗

基因符号: DAND4

UNIPROT ID: O95813 (Gene Accession - BC069491)

背景: This gene encodes a cytokine member of the cysteine knot superfamily, characterized by nine conserved cysteines and a cysteine knot region. The cerberus-related cytokines, together with Dan and DRM/Gremlin, represent a group of bone morphogenetic protein (BMP) antagonists that can bind directly to BMPs and inhibit their activity.

抗原: Fusion protein of human CER1

经过测试的应用: ELISA, IHC

推荐稀释比: IHC: 50-200; ELISA: 5000-10000

种属反应性: Rabbit

克隆性: Rabbit Polyclonal

亚型: Immunogen-specific rabbit IgG

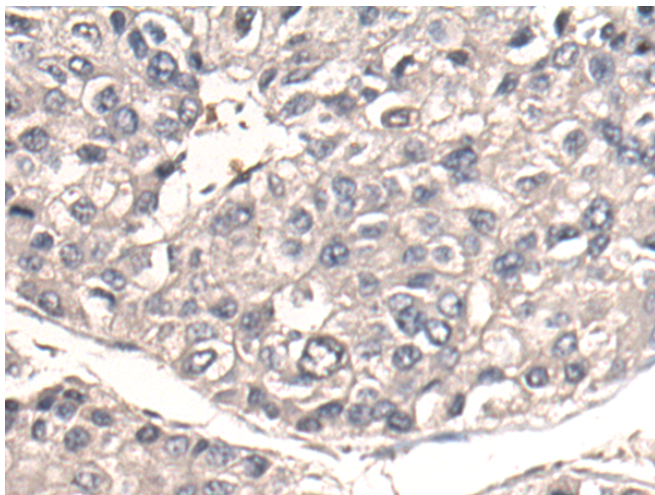
纯化: Antigen affinity purification

种属反应性: Human

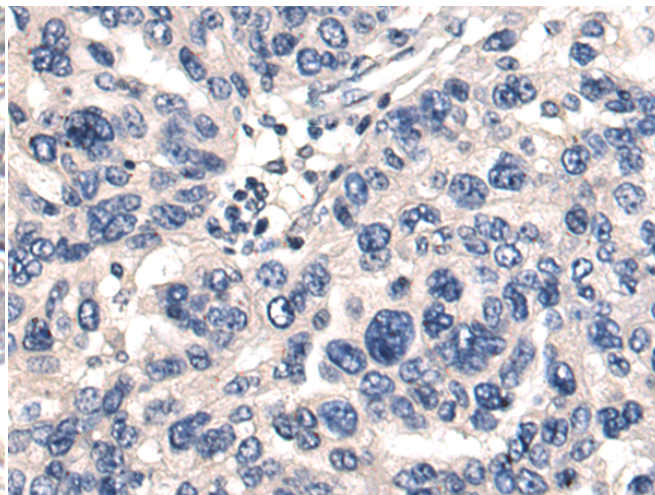
成分: PBS (without Mg²⁺ and Ca²⁺), pH 7.4, 150 mM NaCl, 0.05% Sodium Azide and 40% glycerol

研究领域: Immunology, Signal Transduction, Developmental Biology

储存和运输: Store at -20°C. Avoid repeated freezing and thawing



Immunohistochemistry analysis of paraffin-embedded Human liver cancer tissue using 218475(CER1 Antibody) at a dilution of 1/70(Cytoplasm).



Immunohistochemistry analysis of paraffin-embedded Human breast cancer tissue using 218475(Anti-CER1 Antibody) at a dilution of 1/70.