

## CEP89 RABBIT PAB

货号: S221724

产品全名: CEP89 兔多抗

基因符号: CEP123; CCDC123

**UNIPROT ID:** Q96ST8 (Gene Accession - NP\_116205)

背景: Required for ciliogenesis. Also plays a role in mitochondrial metabolism where it may modulate complex IV activity.

抗原: Synthetic peptide of human CEP89

经过测试的应用: ELISA, IHC

推荐稀释比: IHC: Oct-50; ELISA: 5000-10000

种属反应性: Rabbit

克隆性: Rabbit Polyclonal

亚型: Immunogen-specific rabbit IgG

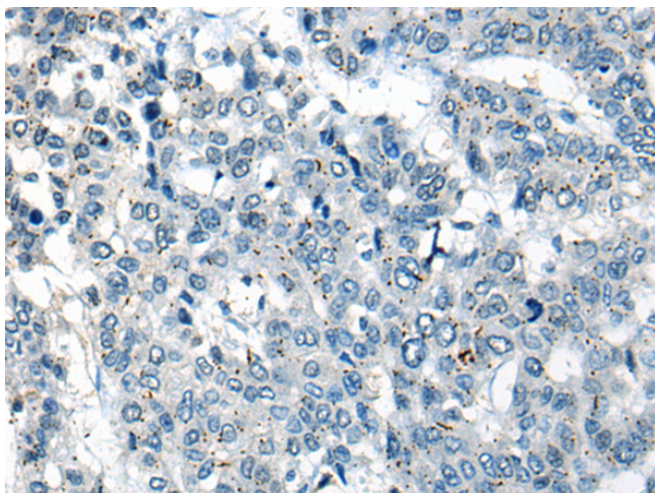
纯化: Antigen affinity purification

种属反应性: Human, Mouse

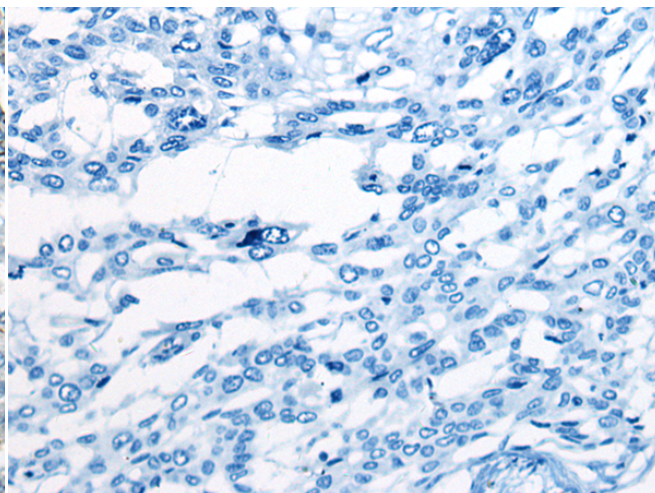
成分: PBS (without Mg<sup>2+</sup> and Ca<sup>2+</sup>), pH 7.4, 150 mM NaCl, 0.05% Sodium Azide and 40% glycerol

研究领域: Cancer

储存和运输: Store at -20°C. Avoid repeated freezing and thawing



Immunohistochemistry analysis of paraffin embedded Human liver cancer tissue using 221724(CEP89 Antibody) at a dilution of 1/20(Cytoplasm).



In comparison with the IHC on the left, the same paraffin-embedded Human liver cancer tissue is first treated with the synthetic peptide and then with 221724(Anti-CEP89 Antibody) at dilution 1/20.