

CEP89 RABBIT PAB

货号: S219352

产品全名: CEP89 兔多抗

基因符号: CEP123; CCDC123

UNIPROT ID: Q96ST8 (Gene Accession - BC032307)

背景: Required for ciliogenesis. Also plays a role in mitochondrial metabolism where it may modulate complex IV activity.

抗原: Fusion protein of human CEP89

经过测试的应用: ELISA, IHC

推荐稀释比: IHC: 100-300; ELISA: 5000-10000

种属反应性: Rabbit

克隆性: Rabbit Polyclonal

亚型: Immunogen-specific rabbit IgG

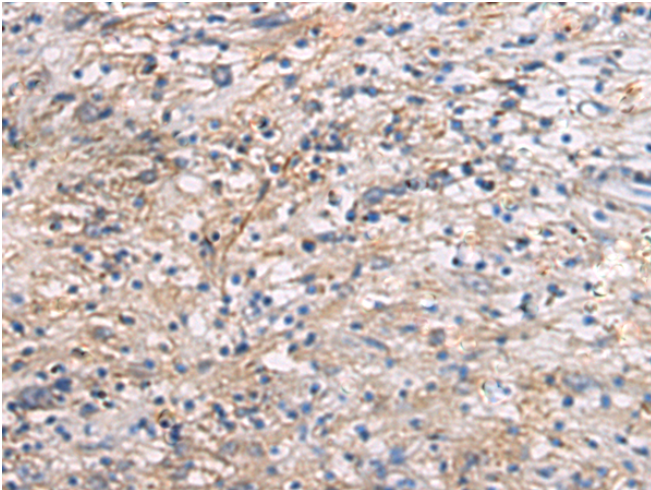
纯化: Antigen affinity purification

种属反应性: Human

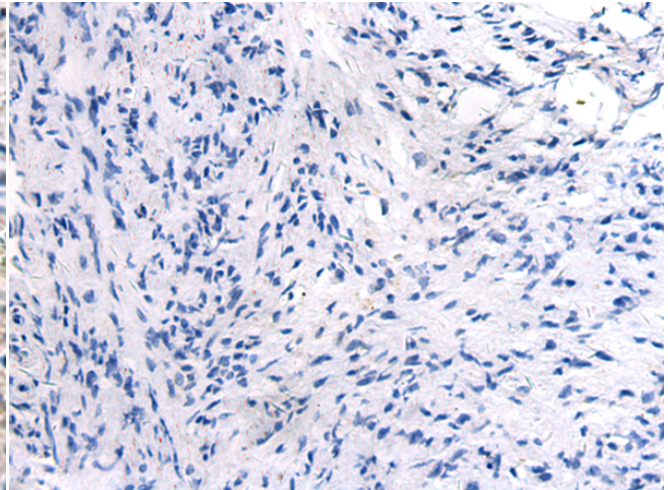
成分: PBS (without Mg²⁺ and Ca²⁺), pH 7.4, 150 mM NaCl, 0.05% Sodium Azide and 40% glycerol

研究领域: Cancer

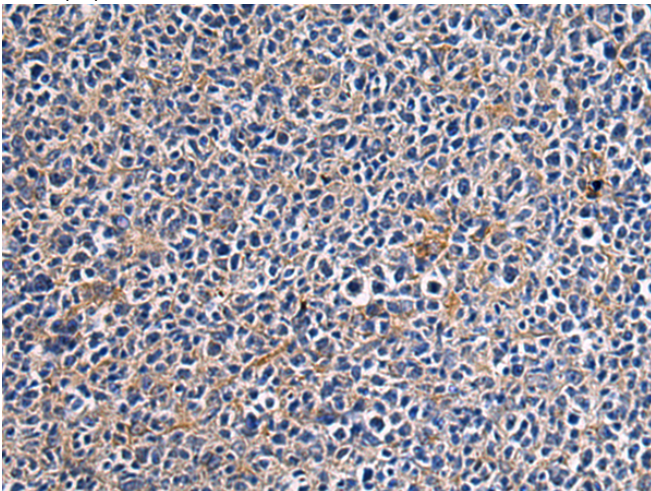
储存和运输: Store at -20°C. Avoid repeated freezing and thawing



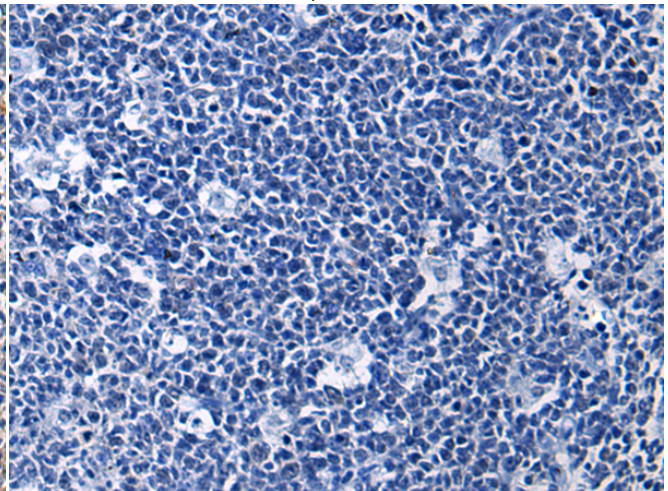
Immunohistochemistry analysis of paraffin embedded Human brain tissue using 219352(CEP89 Antibody) at a dilution of 1/95(Cytoplasm).



In comparison with the IHC on the left, the same paraffin-embedded Human brain tissue is first treated with the fusion protein and then with 219352(Anti-CEP89 Antibody) at dilution 1/95.



The image on the left is immunohistochemistry of paraffin-embedded Human tonsil tissue using 219352(Anti-CEP89 Antibody) at a dilution of 1/95.



In comparison with the IHC on the left, the same paraffin-embedded Human tonsil tissue is first treated with fusion protein and then with D226505(Anti-CEP89 Antibody) at dilution 1/95.



Product Description

Pioneering GTPase and Oncogene Product Development since 2010
