

CEP72 RABBIT PAB

货号: S218471

产品全名: CEP72 兔多抗

基因符号

UNIPROT ID: Q9P209 (Gene Accession - BC000132)

背景: Centrosomes are the major microtubule-organizing centers of mammalian cells. They are composed of a centriole pair and surrounding microtubule-nucleating material termed pericentriolar material (PCM). Bipolar mitotic spindle assembly relies on two intertwined processes: centriole duplication and centrosome maturation. Failure to properly orchestrate centrosome duplication and maturation is subsequently linked to spindle defects, which can result in aneuploidy and promote cancer progression. CEP72 (centrosomal protein 72kDa) is a 647 amino acid protein that localizes to the centrosome and centrosome-surrounding particles throughout the cell cycle. Involved in the recruitment of key centrosomal proteins to the centrosome, CEP72 provides centrosomal microtubule-nucleation activity on the γ Tubulin ring complexes and has critical roles in forming a focused bipolar spindle, which is needed for proper tension generation between sister chromatids. CEP72 exists as two alternatively spliced isoforms.

抗原: Fusion protein of human CEP72

经过测试的应用: ELISA, WB, IHC

推荐稀释比: IHC: 30-150;WB: 200-1000;ELISA: 5000-10000

种属反应性: Rabbit

克隆性: Rabbit Polyclonal

亚型: Immunogen-specific rabbit IgG

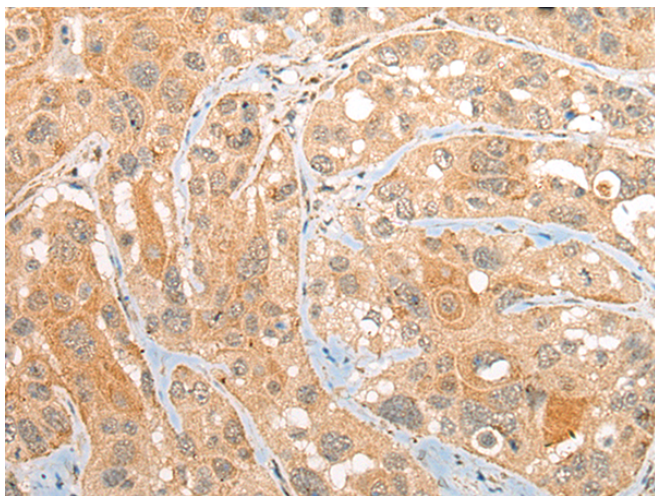
纯化: Antigen affinity purification

种属反应性: Human, Mouse

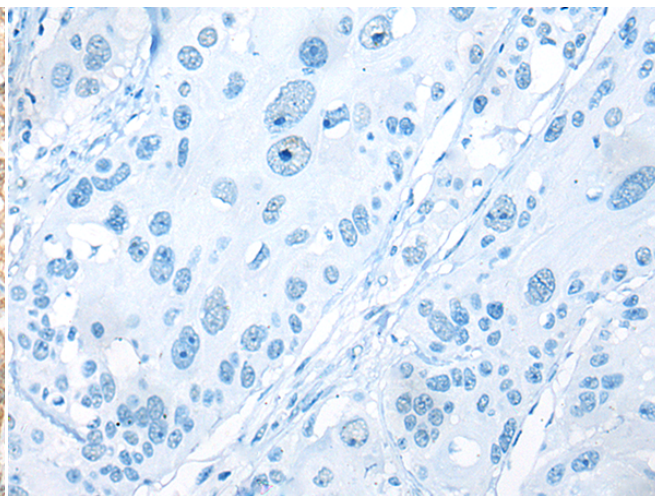
成分: PBS (without Mg²⁺ and Ca²⁺), pH 7.4, 150 mM NaCl, 0.05% Sodium Azide and 40% glycerol

研究领域: Epigenetics and Nuclear Signaling

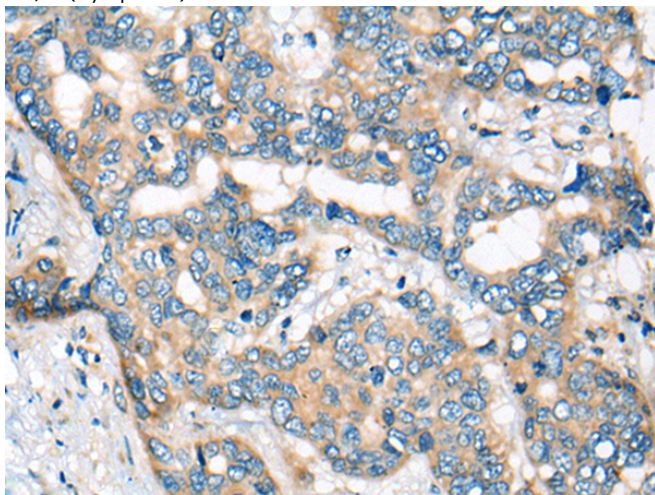
储存和运输: Store at -20°C. Avoid repeated freezing and thawing



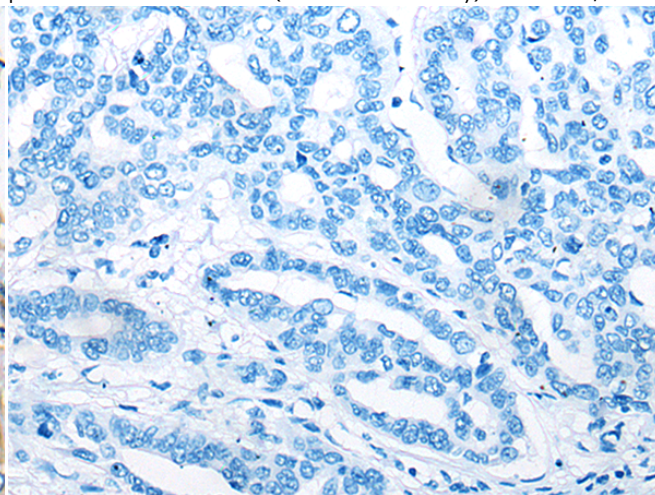
Immunohistochemistry analysis of paraffin embedded Human esophagus cancer tissue using 218471(CEP72 Antibody) at a dilution of 1/40(Cytoplasm).



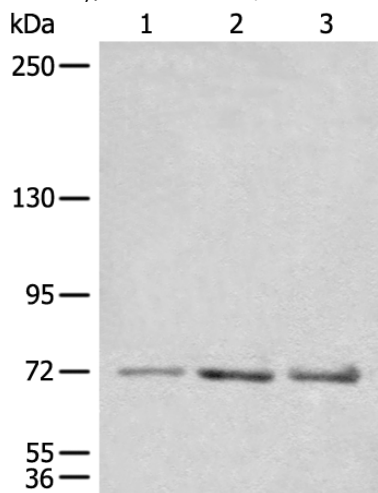
In comparison with the IHC on the left, the same paraffin-embedded Human esophagus cancer tissue is first treated with the fusion protein and then with 218471(Anti-CEP72 Antibody) at dilution 1/40.



The image on the left is immunohistochemistry of paraffin-embedded Human liver cancer tissue using 218471(Anti-CEP72 Antibody) at a dilution of 1/40.



In comparison with the IHC on the left, the same paraffin-embedded Human liver cancer tissue is first treated with fusion protein and then with D224513(Anti-CEP72 Antibody) at dilution 1/40.



Gel: 6%SDS-PAGE, Lysate: 40 µg;
Lane 1-3: TM4, NIH/3T3 and Jurkat cell lysates;
Primary antibody: 218471(CEP72 Antibody) at dilution 1/600;
Secondary antibody: Goat anti rabbit IgG at 1/8000 dilution;
Exposure time: 1 minute



Product Description

Pioneering GTPase and Oncogene Product Development since 2010
