

## CEP70 RABBIT PAB

货号: S218472

产品全名: CEP70 兔多抗

基因符号: BITE

**UNIPROT ID:** Q8NHQ1 (Gene Accession - BC016050 )

**背景:** Plays a role in the organization of both preexisting and nascent microtubules in interphase cells. During mitosis, required for the organization and orientation of the mitotic spindle.

**抗原:** Fusion protein of human CEP70

**经过测试的应用:** ELISA, IHC

**推荐稀释比:** IHC: 20-100; ELISA: 5000-10000

**种属反应性:** Rabbit

**克隆性:** Rabbit Polyclonal

**亚型:** Immunogen-specific rabbit IgG

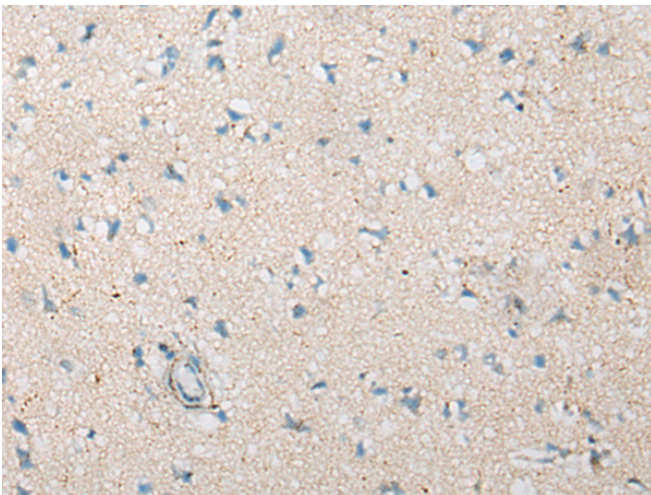
**纯化:** Antigen affinity purification

**种属反应性:** Human

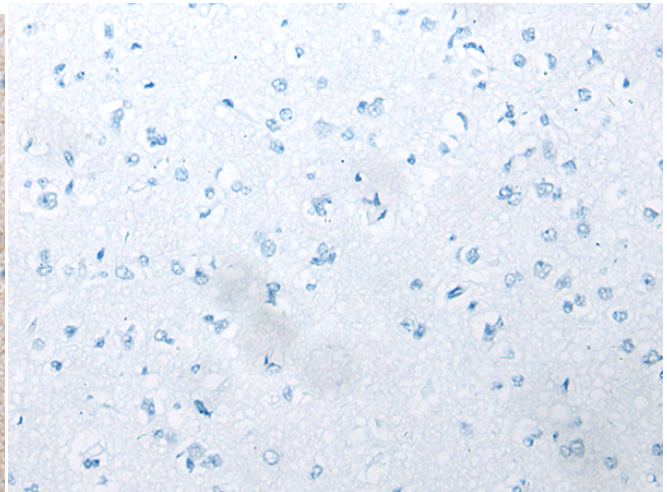
**成分:** PBS (without Mg<sup>2+</sup> and Ca<sup>2+</sup>), pH 7.4, 150 mM NaCl, 0.05% Sodium Azide and 40% glycerol

**研究领域:** Epigenetics and Nuclear Signaling

**储存和运输:** Store at -20°C. Avoid repeated freezing and thawing



Immunohistochemistry analysis of paraffin embedded Human brain tissue using 218472(CEP70 Antibody) at a dilution of 1/35(Cytoplasm).



In comparison with the IHC on the left, the same paraffin-embedded Human brain tissue is first treated with the fusion protein and then with 218472(Anti-CEP70 Antibody) at dilution 1/35.