

CEP55 RABBIT MAB

货号: N263268

产品全名: CEP55 兔单克隆抗体

基因符号 CEP55; C10orf3; URCC6; Centrosomal protein of 55 kDa; Cep55; Up-regulated in colon cancer 6

UNIPROT ID: Q53EZ4

背景: Plays a role in mitotic exit and cytokinesis (PubMed:16198290, PubMed:17853893)

抗原: A synthetic peptide of human CEP55

经过测试的应用: WB, ICC/IF

推荐稀释比: WB: 1/500-1/1000 IF: 1/50-1/200

种属反应性: Rabbit

克隆性: Rabbit Monoclonal

克隆编号: R05-6A6

分子量: Calculated MW: 54 kDa; Observed MW: 54 kDa

亚型: IgG

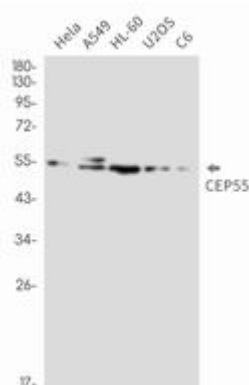
纯化: Affinity Purified

种属反应性: Human, Rat

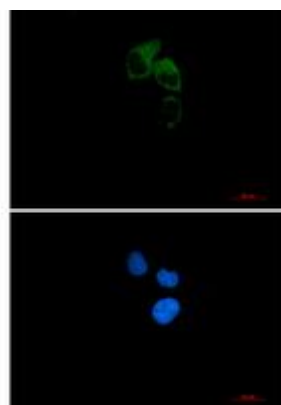
成分: PBS (without Mg²⁺ and Ca²⁺), pH 7.3 containing 50% glycerol, 0.5% BSA and 0.02% sodium azide

研究领域: Cell Biology

储存和运输: Store at -20°C. Avoid repeated freezing and thawing



Western blot analysis of CEP55 in HeLa, A549, HL-60, U2OS, C6 lysates using CEP55 antibody.



Immunocytochemistry analysis of CEP55 (green) in HeLa using CEP55 antibody, and DAPI (blue).



Product Description

Pioneering GTPase and Oncogene Product Development since 2010
