

CENPV RABBIT PAB

货号: S214600

产品全名: CENPV 兔多抗

基因符号: p30; PRR6; CENP-V; 3110013H01Rik

UNIPROT ID: Q7Z7K6 (Gene Accession - NP_859067)

背景: Predicted to enable carbon-sulfur lyase activity and metal ion binding activity. Involved in pericentric heterochromatin assembly; positive regulation of cytokinesis; and regulation of chromosome organization. Acts upstream of or within amoeboid-type cell migration. Located in several cellular components, including midbody; nucleus; and spindle midzone.

抗原: Synthetic peptide of human CENPV

经过测试的应用: ELISA, WB, IHC

推荐稀释比: IHC: 50-100; WB: 500-2000; ELISA: 5000-10000

种属反应性: Rabbit

克隆性: Rabbit Polyclonal

亚型: Immunogen-specific rabbit IgG

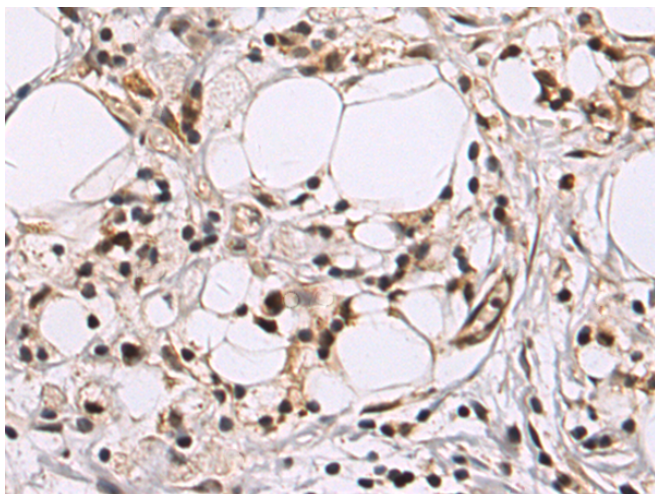
纯化: Antigen affinity purification

种属反应性: Human, Mouse

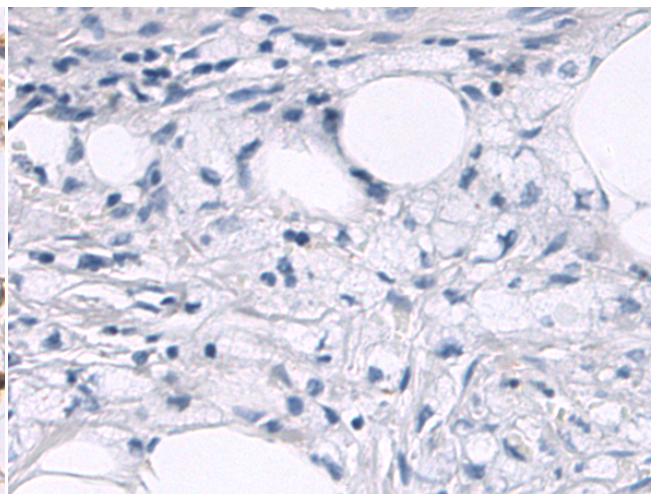
成分: PBS (without Mg²⁺ and Ca²⁺), pH 7.4, 150 mM NaCl, 0.05% Sodium Azide and 40% glycerol

研究领域: Metabolism

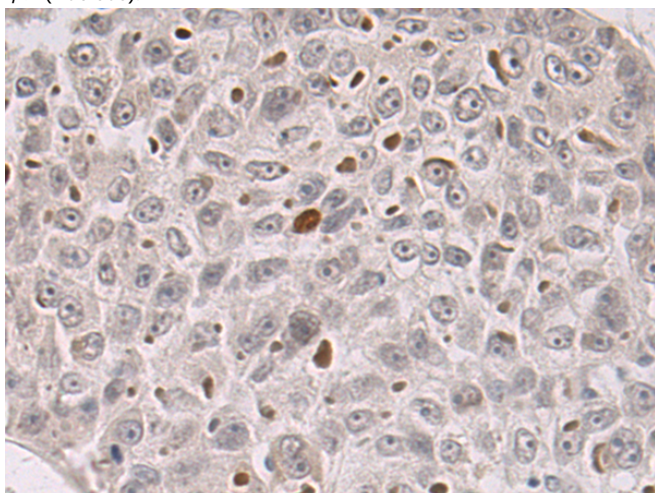
储存和运输: Store at -20°C. Avoid repeated freezing and thawing



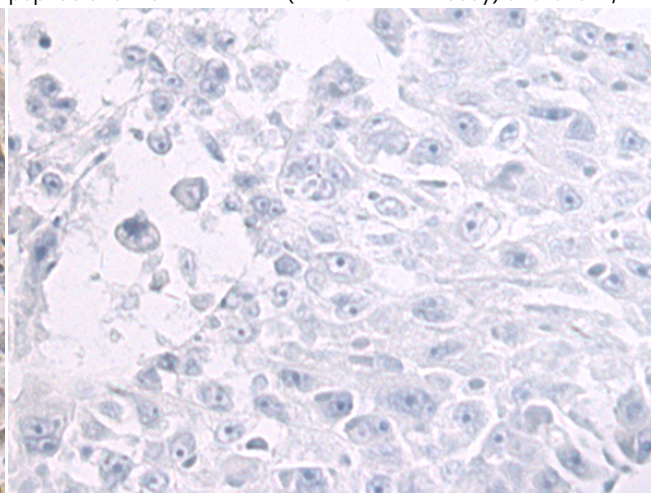
Immunohistochemistry analysis of paraffin embedded Human gastric cancer tissue using 214600 (CENPV Antibody) at a dilution of 1/50 (Nucleus).



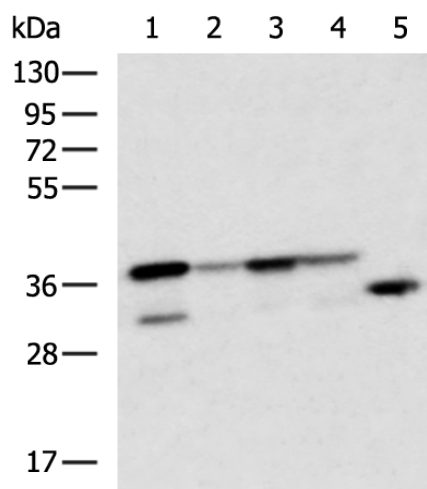
In comparison with the IHC on the left, the same paraffin-embedded Human gastric cancer tissue is first treated with the synthetic peptide and then with 214600 (Anti-CENPV Antibody) at dilution 1/50.



The image on the left is immunohistochemistry of paraffin-embedded Human liver cancer tissue using 214600 (Anti-CENPV Antibody) at a dilution of 1/50.



In comparison with the IHC on the left, the same paraffin-embedded Human liver cancer tissue is first treated with synthetic peptide and then with D162083 (Anti-CENPV Antibody) at dilution 1/50.



Gel: 8%SDS-PAGE, Lysate: 40 µg;
 Lane 1-5: Raji cell, Hela cell, Jurkat cell, 293T cell, Mouse brain tissue lysate;
 Primary antibody: 214600 (CENPV Antibody) at dilution 1/700;
 Secondary antibody: HRP-conjugated Goat anti rabbit IgG at 1/5000 dilution;
 Exposure time: 3 seconds



Product Description

Pioneering GTPase and Oncogene Product Development since 2010
