

CENPN RABBIT PAB

货号: S211036

产品全名: CENPN 兔多抗

基因符号: BM039; CENP-N; ICEN32; C16orf60

UNIPROT ID: Q96H22 (Gene Accession - BC008972)

背景: The protein encoded by this gene forms part of the nucleosome-associated complex and is important for kinetochore assembly. It is bound to kinetochores during S phase and G2 and recruits other proteins to the centromere. Pseudogenes of this gene are located on chromosome 2. Alternative splicing results in multiple transcript variants that encode different protein isoforms.

抗原: Full length fusion 蛋白

经过测试的应用: ELISA, WB, IHC

推荐稀释比: IHC: 100-300;WB: 1000-5000;ELISA: 5000-10000

种属反应性: Rabbit

克隆性: Rabbit Polyclonal

亚型: Immunogen-specific rabbit IgG

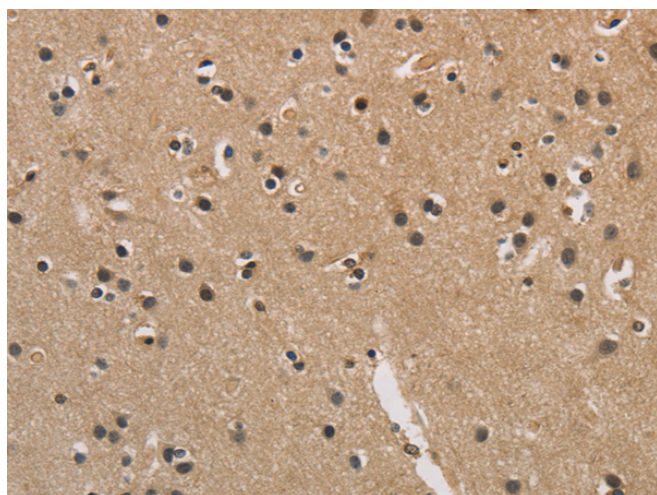
纯化: Antigen affinity purification

种属反应性: Human

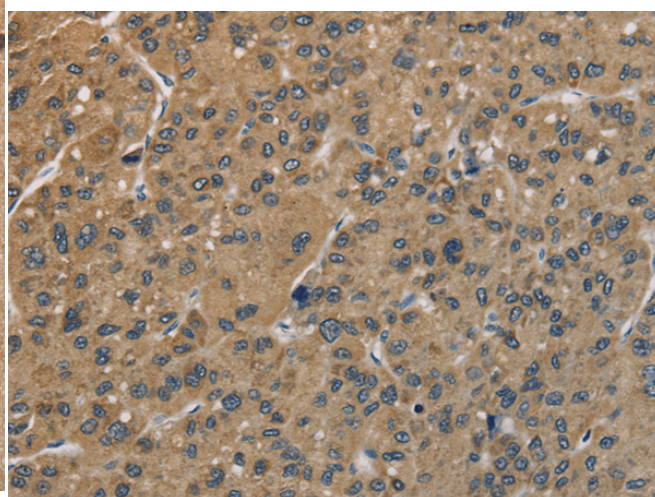
成分: PBS (without Mg²⁺ and Ca²⁺), pH 7.4, 150 mM NaCl, 0.05% Sodium Azide and 40% glycerol

研究领域: Epigenetics and Nuclear Signaling

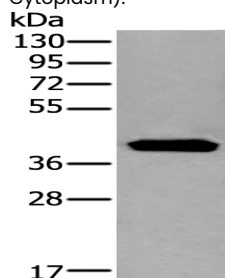
储存和运输: Store at -20°C. Avoid repeated freezing and thawing



Immunohistochemistry analysis of paraffin-embedded Human brain tissue using 211036(CENPN Antibody) at a dilution of 1/70(Nucleus and Cytoplasm).



Immunohistochemistry analysis of paraffin-embedded Human liver cancer tissue using 211036(Anti-CENPN Antibody) at a dilution of 1/70.



Gel: 8%SDS-PAGE, Lysate: 40 µg;
Lane: Human left kidney tissue lysate;
Primary antibody: 211036(CENPN Antibody) at dilution 1/800;
Secondary antibody: Goat anti rabbit IgG at 1/8000 dilution;
Exposure time: 10 seconds