

## CELLULAR APOPTOSIS SUSCEPTIBILITY RABBIT MAB

货号: N262027

产品全名: Cellular Apoptosis Susceptibility 兔单克隆抗体

基因符号 CSE1L; CAS; CSE1; Exp2; Importin-alpha re-exporter; Exportin-2; XPO2

**UNIPROT ID:** P55060

**背景:** Export receptor for importin-alpha. Mediates importin-alpha re-export from the nucleus to the cytoplasm after import substrates (cargos) have been released into the nucleoplasm. In the nucleus binds cooperatively to importin-alpha and to the GTPase Ran in its active GTP-bound form.

**抗原:** A synthetic peptide of human Cellular Apoptosis Susceptibility

**经过测试的应用:** WB,IHC-F,IHC-P,ICC/IF

**推荐稀释比:** WB: 1/500-1/1000 IHC: 1/50-1/100 IF: 1/50-1/200

**种属反应性:** Rabbit

**克隆性:** Rabbit Monoclonal

**克隆编号:** R09-1C6

**分子量:** Calculated MW: 110 kDa; Observed MW: 110 kDa

**亚型:** IgG

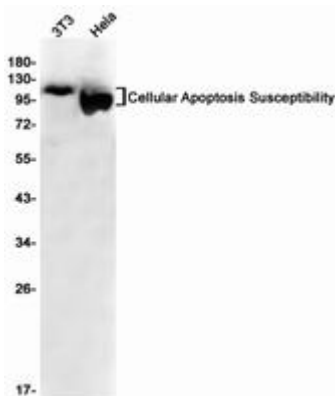
**纯化:** Affinity Purified

**种属反应性:** Human,Mouse

**成分:** PBS (without Mg<sup>2+</sup> and Ca<sup>2+</sup>), pH 7.3 containing 50% glycerol, 0.5% BSA and 0.02% sodium azide

**研究领域:** Cell Biology

**储存和运输:** Store at -20°C. Avoid repeated freezing and thawing



Western blot analysis of ular Apoptosis Susceptibility in 3T3, HeLa lysates using ular Apoptosis Susceptibility antibody.



# Product Description

Pioneering GTPase and Oncogene Product Development since 2010

---