

CELLUBREVIN RABBIT MAB

货号: N263267

产品全名: Cellubrevin 兔单克隆抗体

基因符号 CEB; Cellubrevin; Synaptobrevin 3; VAMP3

UNIPROT ID: Q15836

背景: SNARE involved in vesicular transport from the late endosomes to the trans-Golgi network.

抗原: Recombinant protein of human Cellubrevin

经过测试的应用: WB, ICC/IF, IP

推荐稀释比: WB: 1/500-1/1000 IF: 1/50-1/200 IP: 1/20

种属反应性: Rabbit

克隆性: Rabbit Monoclonal

克隆编号: R01-8D3

分子量: Calculated MW: 11 kDa; Observed MW: 11 kDa

亚型: IgG

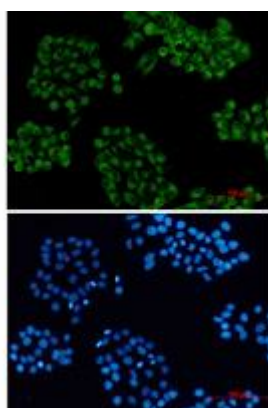
纯化: Affinity Purified

种属反应性: Human

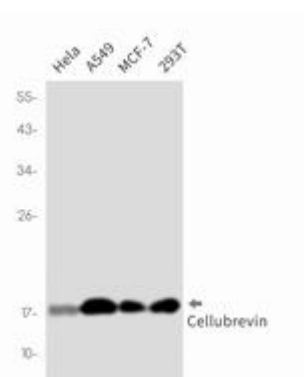
成分: PBS (without Mg²⁺ and Ca²⁺), pH 7.3 containing 50% glycerol, 0.5% BSA and 0.02% sodium azide

研究领域: Signal Transduction

储存和运输: Store at -20°C. Avoid repeated freezing and thawing



Immunocytochemistry analysis of Cellubrevin (green) in HeLa using Cellubrevin antibody, and DAPI (blue)



Western blot analysis of Cellubrevin in HeLa, A549, MCF-7, 293T lysates using Cellubrevin antibody.



Product Description

Pioneering GTPase and Oncogene Product Development since 2010
