

CELF2 RABBIT MAB

货号: N262026

产品全名: CELF2 兔单克隆抗体

基因符号 ETR3; ETR-3; NAPOR; CELF-2; CUGBP2; BRUNOL3; CUG-BP2

UNIPROT ID: O95319

背景: RNA-binding protein implicated in the regulation of several post-transcriptional events. Involved in pre-mRNA alternative splicing, mRNA translation and stability. Mediates exon inclusion and/or exclusion in pre-mRNA that are subject to tissue-specific and developmentally regulated alternative splicing. Specifically activates exon 5 inclusion of TNNT2 in embryonic, but not adult, skeletal muscle. Activates TNNT2 exon 5 inclusion by antagonizing the repressive effect of PTB. Acts as both an activator and repressor of a pair of coregulated exons: promotes inclusion of the smooth muscle (SM) exon but exclusion of the non-muscle (NM) exon in actinin pre-mRNAs. Promotes inclusion of exon 21 and exclusion of exon 5 of the NMDA receptor R1 pre-mRNA. Involved in the apoB RNA editing activity. Increases COX2 mRNA stability and inhibits COX2 mRNA translation in epithelial cells after radiation injury. Modulates the cellular apoptosis program by regulating COX2-mediated prostaglandin E2 (PGE2) expression. Binds to (CUG)_n triplet repeats in the 3'-UTR of transcripts such as DMPK. Binds to the muscle-specific splicing enhancer (MSE) intronic sites flanking the TNNT2 alternative exon 5. Binds preferentially to UG-rich sequences, in particular UG repeat and UGUU motifs. Binds to apoB mRNA, specifically to AU-rich sequences located immediately upstream of the edited cytidine. Binds AU-rich sequences in the 3'-UTR of COX2 mRNA. Binds to an intronic RNA element responsible for the silencing of exon 21 splicing. Binds to (CUG)_n repeats. May be a specific regulator of miRNA biogenesis. Binds to primary microRNA pri-MIR140 and, with CELF1, negatively regulates the processing to mature miRNA (PubMed:28431233).

抗原: Recombinant protein of human CELF-2

经过测试的应用: WB, IHC-F, IHC-P, ICC/IF, IP

推荐稀释比: WB: 1/500-1/1000 IHC: 1/50-1/100 IF: 1/50-1/200 IP: 1/20

种属反应性: Rabbit

克隆性: Rabbit Monoclonal

克隆编号: R08-9E3

分子量: Calculated MW: 54 kDa; Observed MW: 54 kDa

亚型: IgG

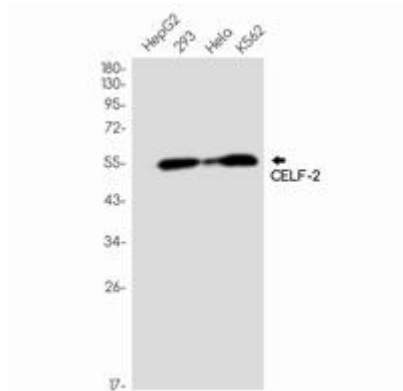
纯化: Affinity Purified

种属反应性: Human, Mouse and Rat

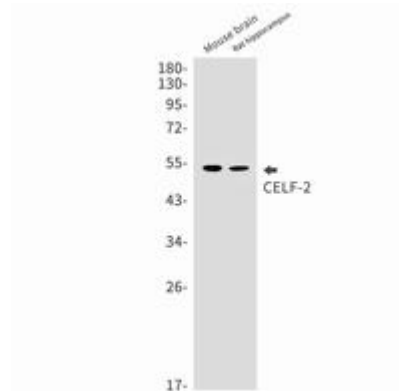
成分: PBS (without Mg^{2+} and Ca^{2+}), pH 7.3 containing 50% glycerol, 0.5% BSA and 0.02% sodium azide

研究领域: Epigenetics and Nuclear Signaling

储存和运输: Store at $-20^{\circ}C$. Avoid repeated freezing and thawing



Western blot analysis of CELF2 in HepG2, 293, Hela, K562 lysates using CELF2 antibody.



Western blot analysis of CELF2 in mouse brain, rat hippocampus lysates using CELF2 antibody.