

## CEBPZ RABBIT PAB

货号: S221680

产品全名: CEBPZ 兔多抗

基因符号: CBF; CBF2; NOC1; HSP-CBF

**UNIPROT ID:** Q03701 (Gene Accession - NP\_005751)

背景: Stimulates transcription from the HSP70 promoter.

抗原: Synthetic peptide of human CEBPZ

经过测试的应用: ELISA, WB, IHC

推荐稀释比: IHC: 25-100; WB: 200-1000; ELISA: 5000-10000

种属反应性: Rabbit

克隆性: Rabbit Polyclonal

亚型: Immunogen-specific rabbit IgG

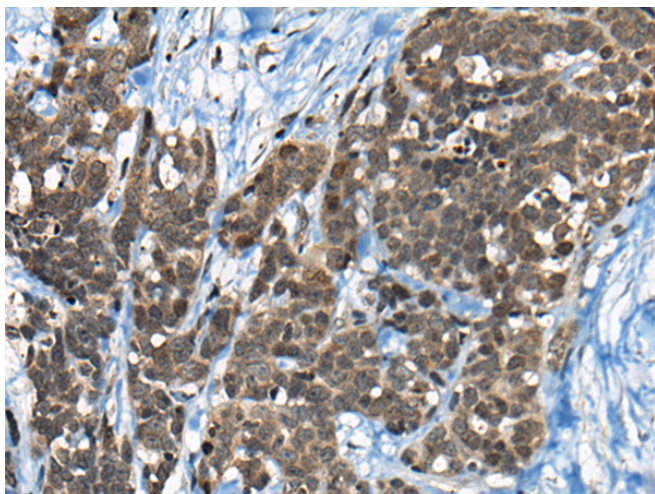
纯化: Antigen affinity purification

种属反应性: Human

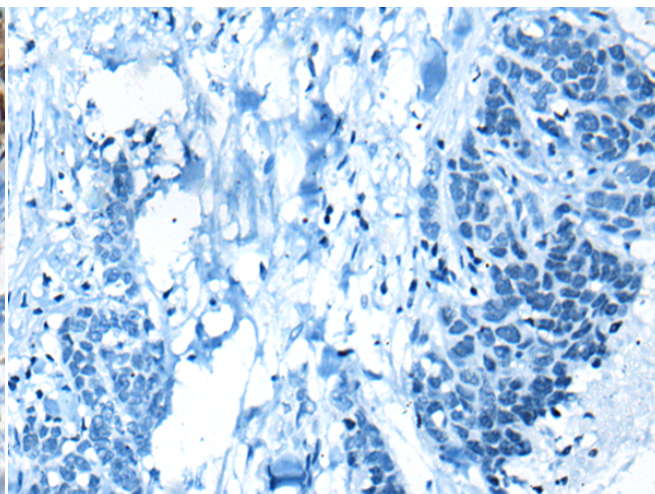
成分: PBS (without Mg<sup>2+</sup> and Ca<sup>2+</sup>), pH 7.4, 150 mM NaCl, 0.05% Sodium Azide and 40% glycerol

研究领域: Epigenetics and Nuclear Signaling

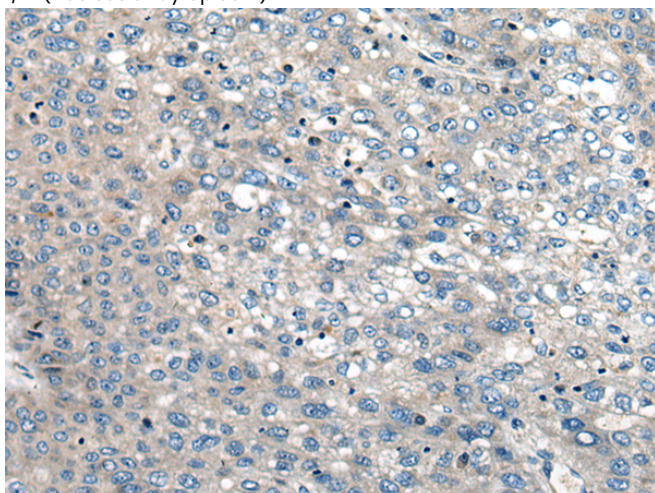
储存和运输: Store at -20°C. Avoid repeated freezing and thawing



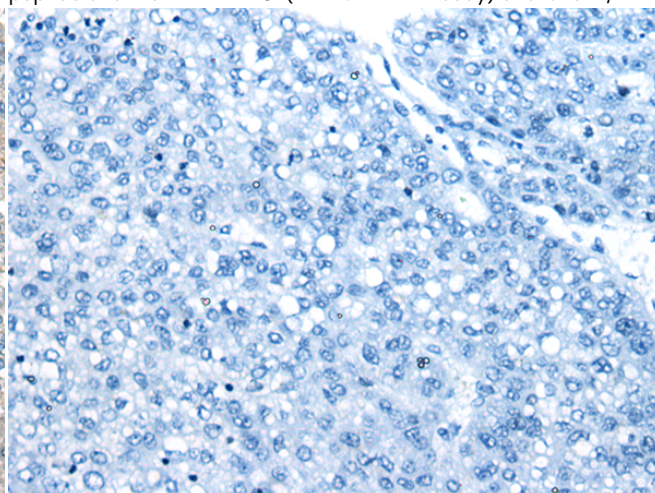
Immunohistochemistry analysis of paraffin embedded Human thyroid cancer tissue using 221680(CEBPZ Antibody) at a dilution of 1/20(Nucleus or Cytoplasm).



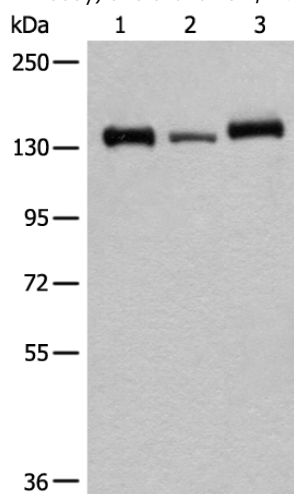
In comparison with the IHC on the left, the same paraffin-embedded Human thyroid cancer tissue is first treated with the synthetic peptide and then with 221680(Anti-CEBPZ Antibody) at dilution 1/20.



The image on the left is immunohistochemistry of paraffin-embedded Human liver cancer tissue using 221680(Anti-CEBPZ Antibody) at a dilution of 1/20.



In comparison with the IHC on the left, the same paraffin-embedded Human liver cancer tissue is first treated with synthetic peptide and then with D263383(Anti-CEBPZ Antibody) at dilution 1/20.



Gel: 6%SDS-PAGE, Lysate: 40 µg;  
Lane 1-3: HeLa, 293T and K562 cell lysates;  
Primary antibody: 221680(CEBPZ Antibody) at dilution 1/200;  
Secondary antibody: Goat anti rabbit IgG at 1/8000 dilution;  
Exposure time: 5 seconds

