

## CEACAM1 RABBIT PAB

货号: S210218

产品全名: CEACAM1 兔多抗

基因符号: BGP, BGP1, BGPI

**UNIPROT ID:** P13688 (Gene Accession - BC014473)

**背景:** This gene encodes a member of the carcinoembryonic antigen (CEA) gene family, which belongs to the immunoglobulin superfamily. Two subgroups of the CEA family, the CEA cell adhesion molecules and the pregnancy-specific glycoproteins, are located within a 1.2 Mb cluster on the long arm of chromosome 19. Eleven pseudogenes of the CEA cell adhesion molecule subgroup are also found in the cluster. The encoded protein was originally described in bile ducts of liver as biliary glycoprotein. Subsequently, it was found to be a cell-cell adhesion molecule detected on leukocytes, epithelia, and endothelia. The encoded protein mediates cell adhesion via homophilic as well as heterophilic binding to other proteins of the subgroup. Multiple cellular activities have been attributed to the encoded protein, including roles in the differentiation and arrangement of tissue three-dimensional structure, angiogenesis, apoptosis, tumor suppression, metastasis, and the modulation of innate and adaptive immune responses.

**抗原:** Fusion protein of human CEACAM1

**经过测试的应用:** ELISA, WB, IHC

**推荐稀释比:** IHC: 15-50;WB: 500-2000;ELISA: 1000-5000

**种属反应性:** Rabbit

**克隆性:** Rabbit Polyclonal

**亚型:** Immunogen-specific rabbit IgG

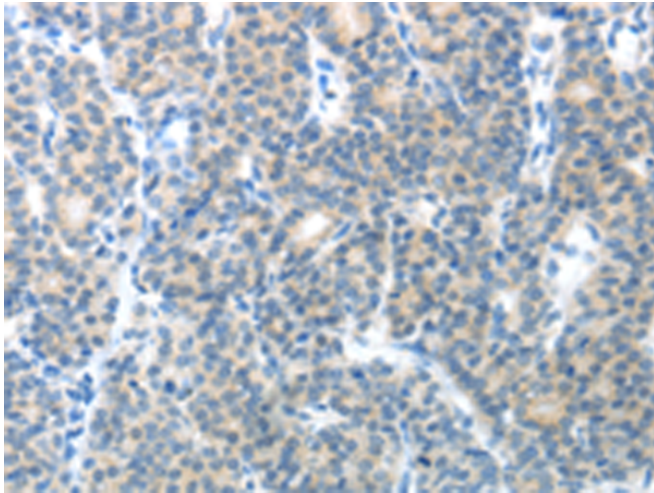
**纯化:** Antigen affinity purification

**种属反应性:** Human

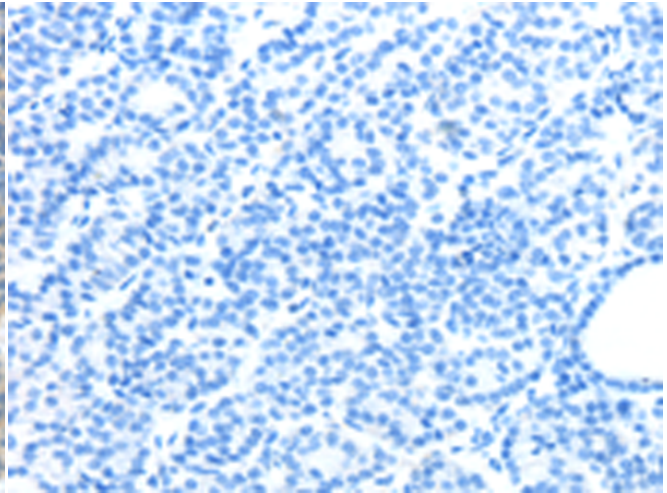
**成分:** PBS (without Mg<sup>2+</sup> and Ca<sup>2+</sup>), pH 7.4, 150 mM NaCl, 0.05% Sodium Azide and 40% glycerol

**研究领域:** Cancer

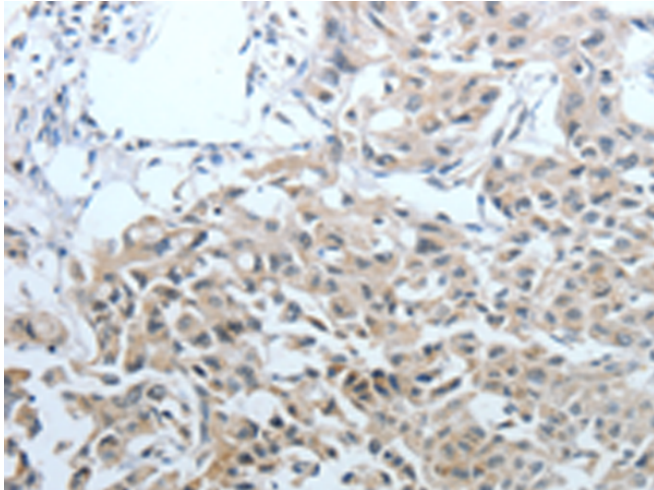
**储存和运输:** Store at -20°C. Avoid repeated freezing and thawing



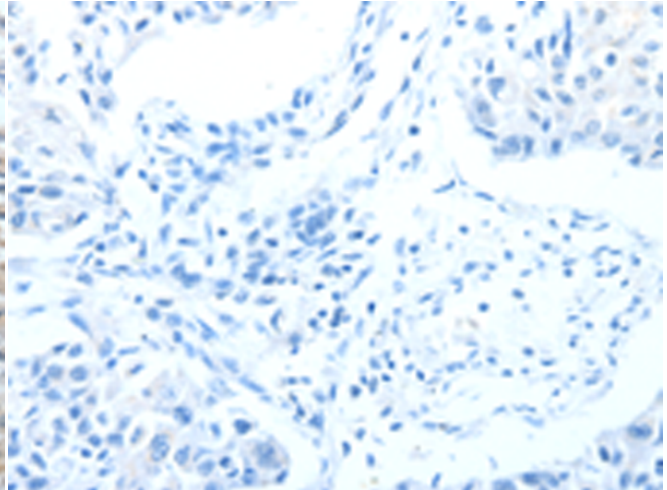
Immunohistochemistry analysis of paraffin embedded Human thyroid cancer tissue using 210218(CEACAM1 Antibody) at a dilution of 1/25(Cytoplasm).



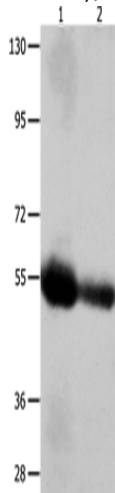
In comparison with the IHC on the left, the same paraffin-embedded Human thyroid cancer tissue is first treated with the fusion protein and then with 210218(Anti-CEACAM1 Antibody) at dilution 1/25.



The image on the left is immunohistochemistry of paraffin-embedded Human lung cancer tissue using 210218(Anti-CEACAM1 Antibody) at a dilution of 1/25.



In comparison with the IHC on the left, the same paraffin-embedded Human lung cancer tissue is first treated with fusion protein and then with D120408(Anti-CEACAM1 Antibody) at dilution 1/25.



Gel: 10%SDS-PAGE, Lysate: 60 µg;  
Lane 1-2: Human liver cancer tissue, Human bladder carcinoma tissue;  
Primary antibody: 210218(CEACAM1 Antibody) at dilution 1/400;  
Secondary antibody: Goat anti rabbit IgG at 1/8000 dilution;  
Exposure time: 2 minutes



# Product Description

Pioneering GTPase and Oncogene Product Development since 2010

---