

## CDV3 RABBIT PAB

货号: S221711

产品全名: CDV3 兔多抗

基因符号 H41

**UNIPROT ID:** Q9UKY7 (Gene Accession - NP\_060018)

**背景:** The CDV3 protein is a 258 amino acid protein that localizes in the cytoplasm. It acts as a repressor of Neu and subsequently may be involved in the progression of some cancers, including breast cancer, gliomas and prostate tumors.

**抗原:** Synthetic peptide of human CDV3

**经过测试的应用:** ELISA, IHC

**推荐稀释比:** IHC: 20-100; ELISA: 5000-10000

**种属反应性:** Rabbit

**克隆性:** Rabbit Polyclonal

**亚型:** Immunogen-specific rabbit IgG

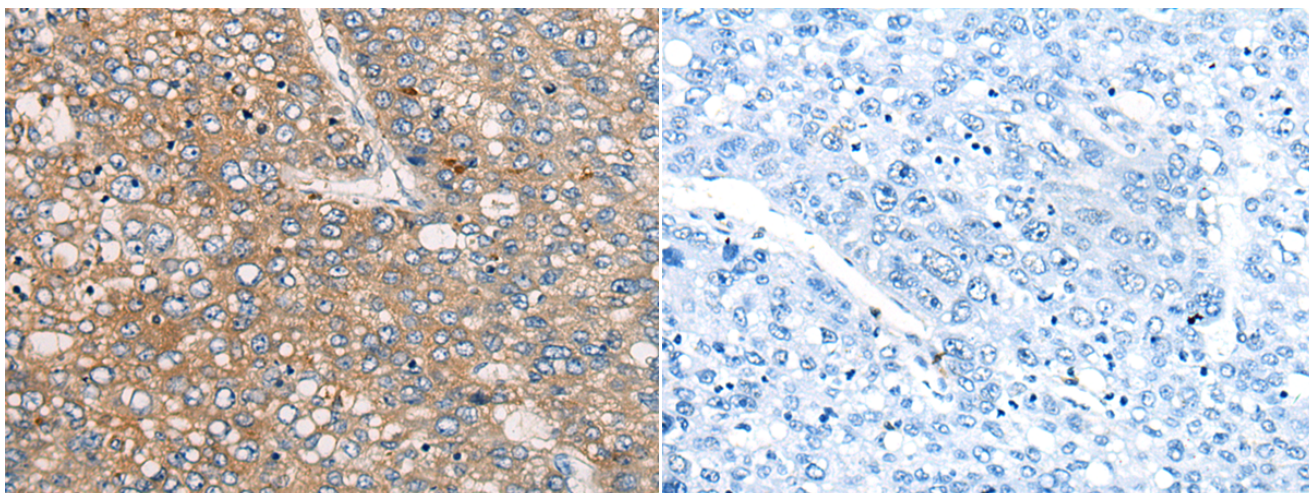
**纯化:** Antigen affinity purification

**种属反应性:** Human, Mouse

**成分:** PBS (without Mg<sup>2+</sup> and Ca<sup>2+</sup>), pH 7.4, 150 mM NaCl, 0.05% Sodium Azide and 40% glycerol

**研究领域:** Cell Biology

**储存和运输:** Store at -20°C. Avoid repeated freezing and thawing



Immunohistochemistry analysis of paraffin embedded Human liver cancer tissue using 221711(CDV3 Antibody) at a dilution of 1/35(Cytoplasm).

In comparison with the IHC on the left, the same paraffin-embedded Human liver cancer tissue is first treated with the synthetic peptide and then with 221711(Anti-CDV3 Antibody) at dilution 1/35.