

CDT1 RABBIT PAB

货号: N226004

产品全名: CDT1 兔多抗

基因符号 CDT 1; Chromatin licensing and DNA replication factor 1; Retroviral integration site 2; RIS2

UNIPROT ID: Q9H211

背景: Cooperates with CDC6 to promote the loading of the mini-chromosome maintenance complex onto chromatin to form the pre-replication complex necessary to initiate DNA replication. Binds DNA in a sequence-, strand-, and conformation-independent manner. Potential oncogene.

抗原: Recombinant protein of human CDT1

经过测试的应用: FC, ICC/IF, IP, WB

推荐稀释比: WB: 1/500-1/1000 IF: 1/50-1/200 IP: 1/20 FC: 1/50-1/100

种属反应性: Rabbit

克隆性: Rabbit Polyclonal

分子量: Calculated MW: 60 kDa; Observed MW: 65 kDa

亚型: IgG

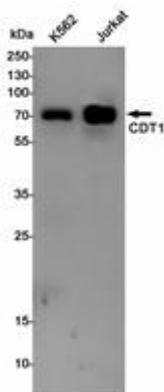
纯化: Affinity Purified

种属反应性: Human

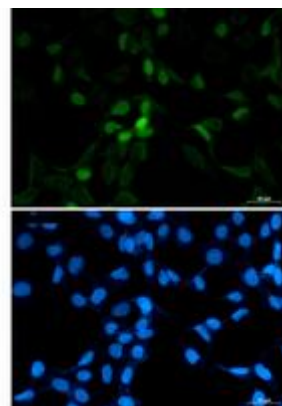
成分: PBS (without Mg²⁺ and Ca²⁺), pH 7.3 containing 50% glycerol, 0.5% BSA and 0.02% sodium azide

研究领域: Epigenetics and Nuclear Signaling

储存和运输: Store at -20°C. Avoid repeated freezing and thawing



Western blot analysis of CDT1 in K562, Jurkat lysates using CDT1 antibody.



Immunocytochemistry analysis of CDT1 (green) in 293T using CDT1 antibody, and DAPI (blue).



Product Description

Pioneering GTPase and Oncogene Product Development since 2010
