

CDT1 RABBIT PAB

货号: N225846

产品全名: CDT1 兔多抗

基因符号 CDT 1; Chromatin licensing and DNA replication factor 1; Retroviral integration site 2; RIS2

UNIPROT ID: Q9H211

背景: Cooperates with CDC6 to promote the loading of the mini-chromosome maintenance complex onto chromatin to form the pre-replication complex necessary to initiate DNA replication. Binds DNA in a sequence-, strand-, and conformation-independent manner. Potential oncogene.

抗原: A synthesized peptide derived from human CDT1

经过测试的应用: WB,IHC-P,ICC/IF,IP

推荐稀释比: WB: 1/500-1/1000 IHC: 1/50-1/100 IF: 1/50-1/200 IP: 1/20

种属反应性: Rabbit

克隆性: Rabbit Polyclonal

分子量: Calculated MW: 60 kDa; Observed MW: 60 kDa

亚型: IgG

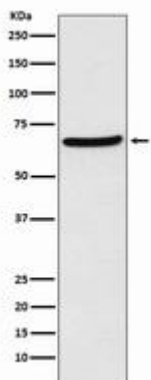
纯化: Affinity Chromatography

种属反应性: Human

成分: PBS (without Mg²⁺ and Ca²⁺), pH 7.3 containing 50% glycerol, 0.5% BSA and 0.02% sodium azide

研究领域: Epigenetics and Nuclear Signaling

储存和运输: Store at -20°C. Avoid repeated freezing and thawing



Western blot analysis of CDT1 in HEK293 lysates using CDT1 antibody.



Product Description

Pioneering GTPase and Oncogene Product Development since 2010
