

CDRT15L2 RABBIT PAB

货号: S221710

产品全名: CDRT15L2 兔多抗

基因符号

UNIPROT ID: A8MXV6 (Gene Accession - NP_001177719)

背景: The function of this protein remains unknown.

抗原: Synthetic peptide of human CDRT15L2

经过测试的应用: ELISA, IHC

推荐稀释比: IHC: 25-100; ELISA: 5000-10000

种属反应性: Rabbit

克隆性: Rabbit Polyclonal

亚型: Immunogen-specific rabbit IgG

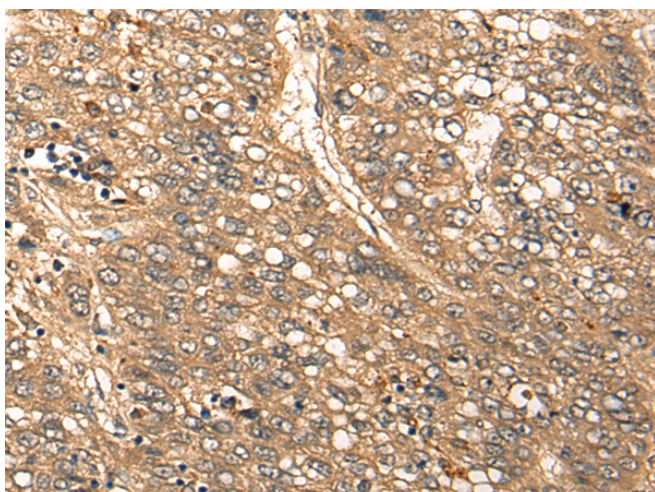
纯化: Antigen affinity purification

种属反应性: Human

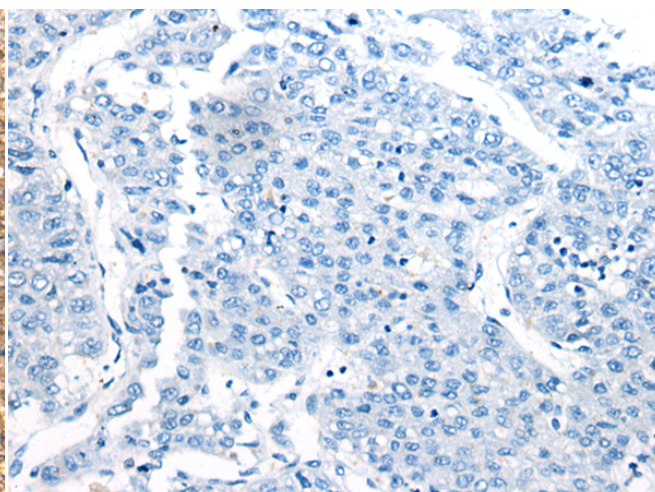
成分: PBS (without Mg²⁺ and Ca²⁺), pH 7.4, 150 mM NaCl, 0.05% Sodium Azide and 40% glycerol

研究领域: Cell Biology

储存和运输: Store at -20°C. Avoid repeated freezing and thawing



Immunohistochemistry analysis of paraffin embedded Human liver cancer tissue using 221710 (CDRT15L2 Antibody) at a dilution of 1/20 (Cell membrane).



In comparison with the IHC on the left, the same paraffin-embedded Human liver cancer tissue is first treated with the synthetic peptide and then with 221710 (Anti-CDRT15L2 Antibody) at dilution 1/20.