

## CDKL2 RABBIT PAB

货号: S221708

产品全名: CDKL2 兔多抗

基因符号: P56; KKIAMRE

**UNIPROT ID:** Q92772 (Gene Accession - NP\_003939)

**背景:** This gene product is a member of a large family of CDC2-related serine/threonine protein kinases. It accumulates primarily in the cytoplasm, with lower levels in the nucleus.

**抗原:** Synthetic peptide of human CDKL2

**经过测试的应用:** ELISA, WB, IHC

**推荐稀释比:** IHC: 25-100;WB: 500-2000;ELISA: 5000-10000

**种属反应性:** Rabbit

**克隆性:** Rabbit Polyclonal

**亚型:** Immunogen-specific rabbit IgG

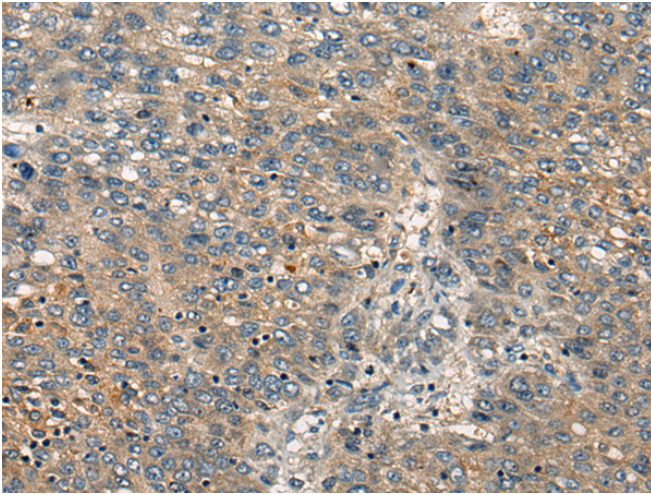
**纯化:** Antigen affinity purification

**种属反应性:** Human, Mouse, Rat

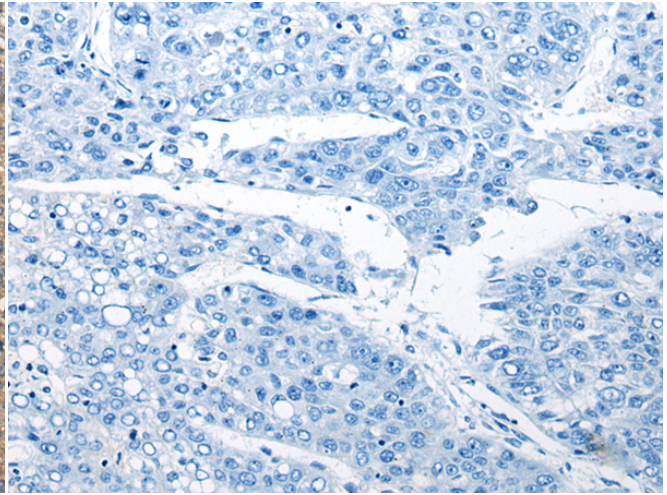
**成分:** PBS (without Mg<sup>2+</sup> and Ca<sup>2+</sup>), pH 7.4, 150 mM NaCl, 0.05% Sodium Azide and 40% glycerol

**研究领域:** Signal Transduction

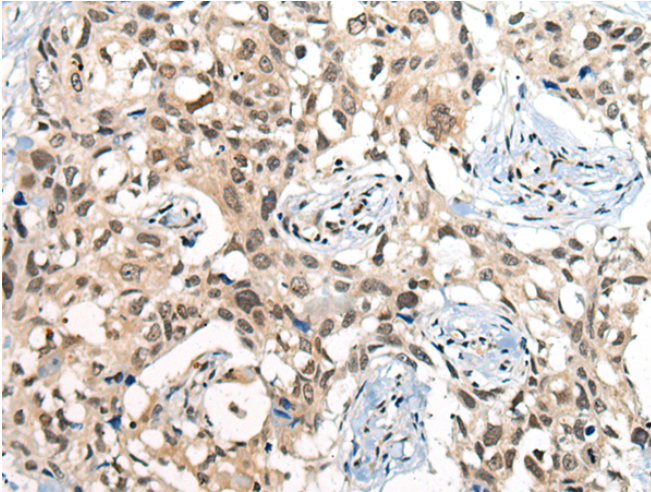
**储存和运输:** Store at -20°C. Avoid repeated freezing and thawing



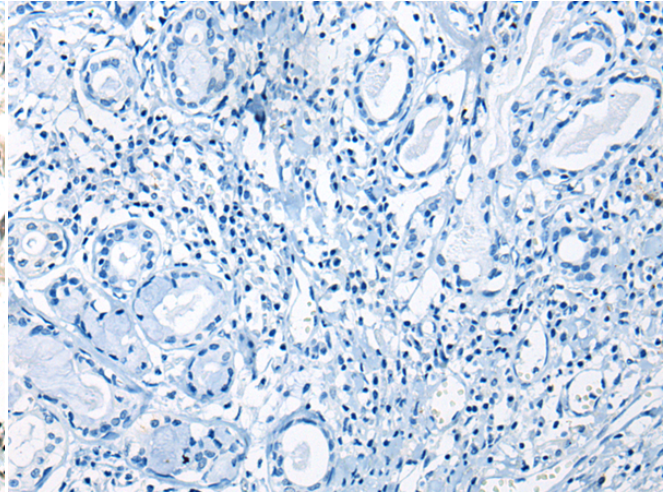
Immunohistochemistry analysis of paraffin embedded Human liver cancer tissue using 221708(CDKL2 Antibody) at a dilution of 1/25(Cytoplasm or Nucleus).



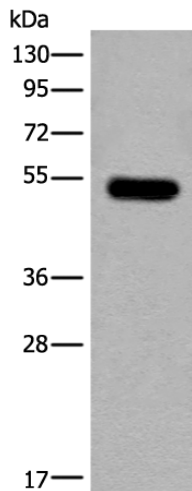
In comparison with the IHC on the left, the same paraffin-embedded Human liver cancer tissue is first treated with the synthetic peptide and then with 221708(Anti-CDKL2 Antibody) at dilution 1/25.



The image on the left is immunohistochemistry of paraffin-embedded Human lung cancer tissue using 221708(Anti-CDKL2 Antibody) at a dilution of 1/25.



In comparison with the IHC on the left, the same paraffin-embedded Human lung cancer tissue is first treated with synthetic peptide and then with D263417(Anti-CDKL2 Antibody) at dilution 1/25.



Gel: 8%SDS-PAGE, Lysate: 40 µg;  
Lane: Mouse brain tissue lysate;  
Primary antibody: 221708(CDKL2 Antibody) at dilution 1/250;  
Secondary antibody: Goat anti rabbit IgG at 1/8000 dilution;  
Exposure time: 30 seconds



# Product Description

Pioneering GTPase and Oncogene Product Development since 2010

---