

## CDK2 RABBIT MAB

货号: N261559

产品全名: CDK2 兔单克隆抗体

基因符号 CDK2; CDKN2; Cyclin-dependent kinase 2; Cell division protein kinase 2; p33 protein kinase

**UNIPROT ID:** P24941

**背景:** The protein encoded by this gene is a member of the Ser/Thr protein kinase family. This protein is a catalytic subunit of the highly conserved protein kinase complex known as M-phase promoting factor (MPF), which is essential for G1/S and G2/M phase transitions of eukaryotic cell cycle.

**抗原:** A synthetic peptide of human Cdk2

**经过测试的应用:** WB,IHC-F,IHC-P,ICC/IF,IP

**推荐稀释比:** WB: 1/500-1/1000 IHC: 1/50-1/100 IF: 1/50-1/200 IP: 1/20

**种属反应性:** Rabbit

**克隆性:** Rabbit Monoclonal

**克隆编号:** R04-1D5

**分子量:** Calculated MW: 34 kDa; Observed MW: 34 kDa

**亚型:** IgG

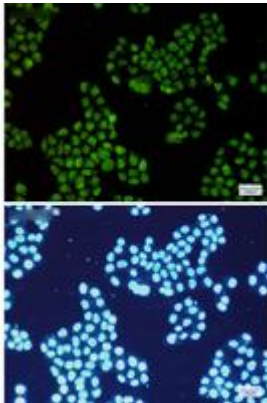
**纯化:** Affinity Purified

**种属反应性:** Human,Rat,Hamster

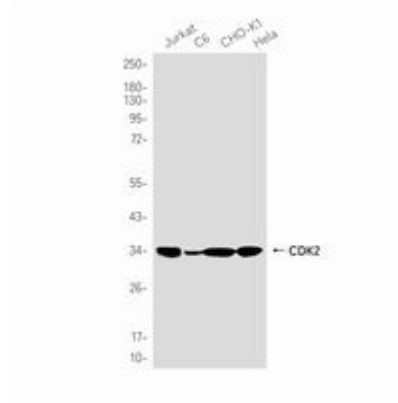
**成分:** PBS (without Mg<sup>2+</sup> and Ca<sup>2+</sup>), pH 7.3 containing 50% glycerol, 0.5% BSA and 0.02% sodium azide

**研究领域:** Cell Biology

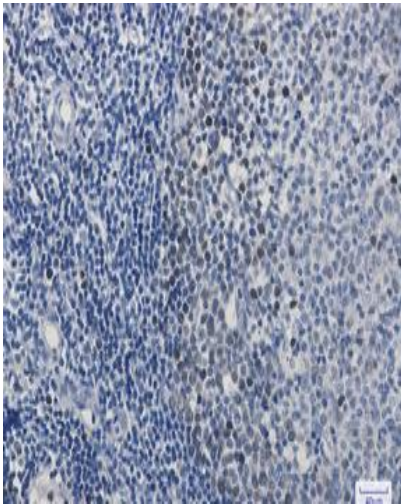
**储存和运输:** Store at -20°C. Avoid repeated freezing and thawing



Immunocytochemistry analysis of CDK2 (green) in HeLa using CDK2 antibody, and DAPI (blue)



Western blot analysis of CDK2 in Jurkat, C6, CHO-K1, HeLa lysates using CDK2 antibody.



Immunohistochemistry analysis of paraffin-embedded Human tonsil using Cdk2 antibody. High-pressure and temperature Sodium Citrate pH 6.0 was used for antigen retrieval.