

CDH1 RABBIT PAB

货号: S219939

产品全名: CDH1 兔多抗

基因符号: UVO; CDHE; ECAD; LCAM; Arc-1; BCDS1; CD324

UNIPROT ID: P12830 (Gene Accession - NP_004351)

背景: This gene encodes a classical cadherin of the cadherin superfamily. Alternative splicing results in multiple transcript variants, at least one of which encodes a preproprotein that is proteolytically processed to generate the mature glycoprotein. This calcium-dependent cell-cell adhesion protein is comprised of five extracellular cadherin repeats, a transmembrane region and a highly conserved cytoplasmic tail. Mutations in this gene are correlated with gastric, breast, colorectal, thyroid and ovarian cancer. Loss of function of this gene is thought to contribute to cancer progression by increasing proliferation, invasion, and/or metastasis. The ectodomain of this protein mediates bacterial adhesion to mammalian cells and the cytoplasmic domain is required for internalization. This gene is present in a gene cluster with other members of the cadherin family on chromosome 16.

抗原: Synthetic peptide of human CDH1

经过测试的应用: ELISA, WB, IHC

推荐稀释比: IHC: 50-100; WB: 500-2000; ELISA: 5000-10000

种属反应性: Rabbit

克隆性: Rabbit Polyclonal

亚型: Immunogen-specific rabbit IgG

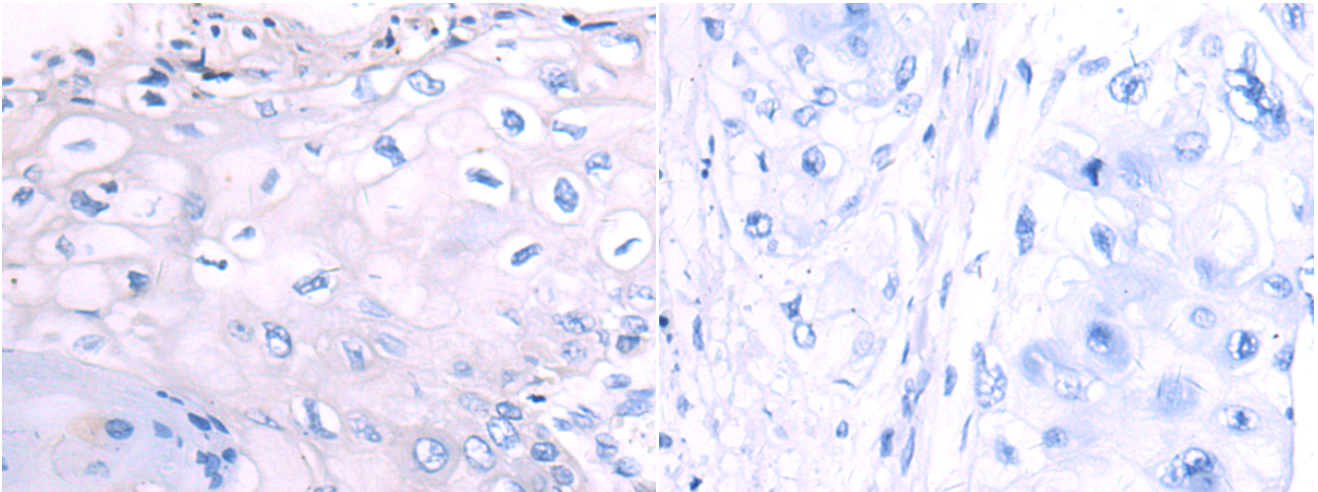
纯化: Antigen affinity purification

种属反应性: Human, Mouse, Rat

成分: PBS (without Mg²⁺ and Ca²⁺), pH 7.4, 150 mM NaCl, 0.05% Sodium Azide and 40% glycerol

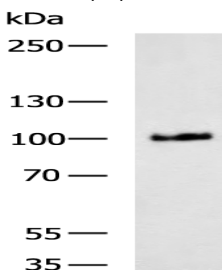
研究领域: Signal Transduction, Developmental Biology

储存和运输: Store at -20°C. Avoid repeated freezing and thawing



Immunohistochemistry analysis of paraffin embedded Human esophagus cancer tissue using 219939(CDH1 Antibody) at a dilution of 1/50(Cytoplasm and Cell membrane).

In comparison with the IHC on the left, the same paraffin-embedded Human esophagus cancer tissue is first treated with the synthetic peptide and then with 219939(Anti-CDH1 Antibody) at dilution 1/50.



Gel: 6%SDS-PAGE, Lysate: 40 µg;

Lane: MCF-7 cell lysate;

Primary antibody: 219939(CDH1 Antibody) at dilution 1/800;

Secondary antibody: HRP-conjugated Goat anti rabbit IgG at 1/5000 dilution;

Exposure time: 10 seconds



Product Description

Pioneering GTPase and Oncogene Product Development since 2010
