

CDC7 RABBIT PAB

货号: S220450

产品全名: CDC7 兔多抗

基因符号 Hsk1; CDC7L1; HsCDC7; huCDC7

UNIPROT ID: O00311 (Gene Accession - NP_001127891)

背景: This gene encodes a cell division cycle protein with kinase activity that is critical for the G1/S transition. The yeast homolog is also essential for initiation of DNA replication as cell division occurs. Overexpression of this gene product may be associated with neoplastic transformation for some tumors. Multiple alternatively spliced transcript variants that encode the same protein have been detected.

抗原: Synthetic peptide of human CDC7

经过测试的应用: ELISA, IHC

推荐稀释比: IHC: 100-300; ELISA: 2000-10000

种属反应性: Rabbit

克隆性: Rabbit Polyclonal

亚型: Immunogen-specific rabbit IgG

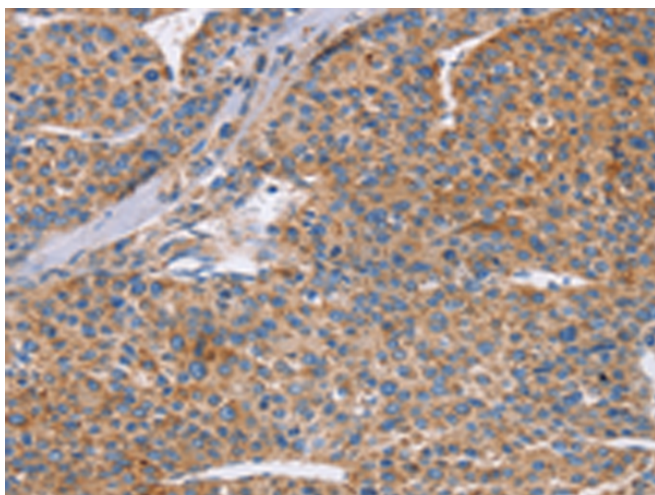
纯化: Antigen affinity purification

种属反应性: Human, Mouse

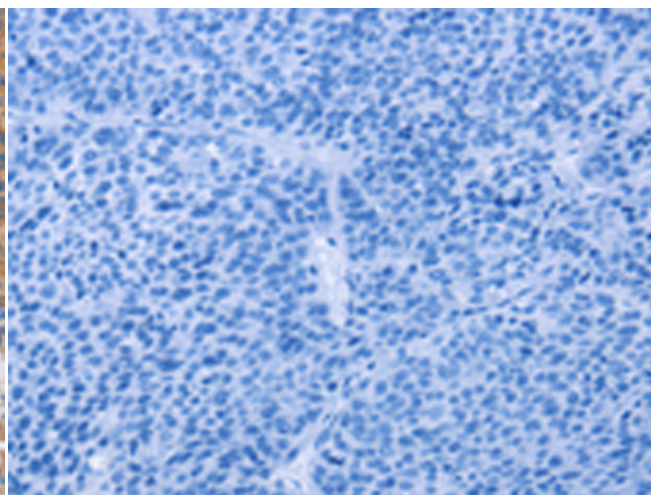
成分: PBS (without Mg²⁺ and Ca²⁺), pH 7.4, 150 mM NaCl, 0.05% Sodium Azide and 40% glycerol

研究领域: Epigenetics and Nuclear Signaling, Cancer

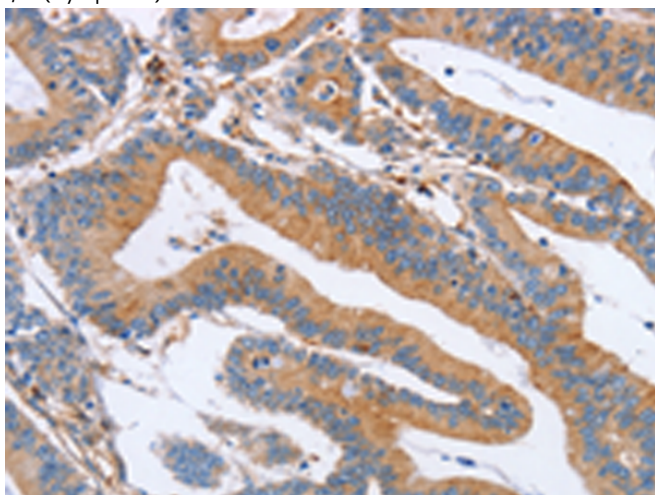
储存和运输: Store at -20°C. Avoid repeated freezing and thawing



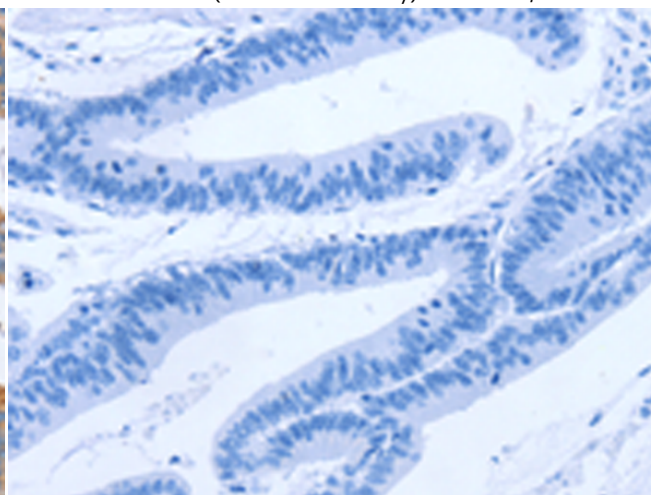
Immunohistochemistry analysis of paraffin embedded Human liver cancer tissue using 220450(CDC7 Antibody) at a dilution of 1/70(Cytoplasm).



In comparison with the IHC on the left, the same paraffin-embedded Human liver cancer tissue is first treated with the synthetic peptide and then with 220450(Anti-CDC7 Antibody) at dilution 1/70.



The image on the left is immunohistochemistry of paraffin-embedded Human colon cancer tissue using 220450(Anti-CDC7 Antibody) at a dilution of 1/70.



In comparison with the IHC on the left, the same paraffin-embedded Human colon cancer tissue is first treated with synthetic peptide and then with D261545(Anti-CDC7 Antibody) at dilution 1/70.



Product Description

Pioneering GTPase and Oncogene Product Development since 2010
