

CDC42BPA RABBIT PAB

货号: S221705

产品全名: CDC42BPA 兔多抗

基因符号 MRCK; MRCKA; PK428

UNIPROT ID: Q5VT25 (Gene Accession - XP_005273381)

背景: The protein encoded by this gene is a member of the Serine/Threonine protein kinase family. This kinase contains multiple functional domains. Its kinase domain is highly similar to that of the myotonic dystrophy protein kinase (DMPK). This kinase also contains a Rac interactive binding (CRIB) domain, and has been shown to bind CDC42. It may function as a CDC42 downstream effector mediating CDC42 induced peripheral actin formation, and promoting cytoskeletal reorganization. Multiple alternatively spliced transcript variants have been described, and the full-length nature of two of them has been reported.

抗原: Synthetic peptide of human CDC42BPA

经过测试的应用: ELISA, WB, IHC

推荐稀释比: IHC: 30-150;WB: 500-2000;ELISA: 5000-10000

种属反应性: Rabbit

克隆性: Rabbit Polyclonal

亚型: Immunogen-specific rabbit IgG

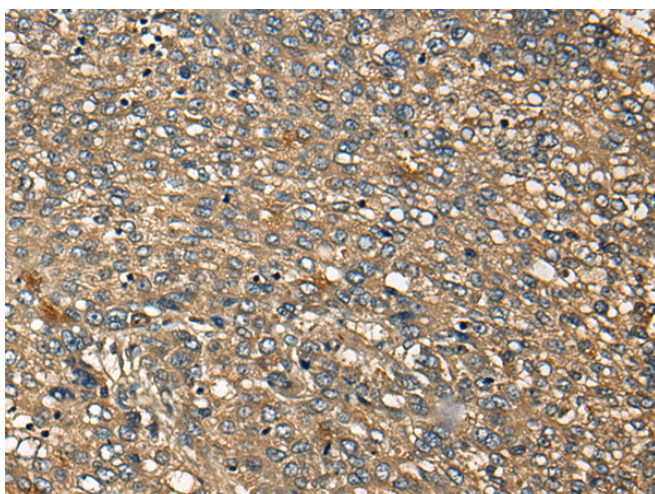
纯化: Antigen affinity purification

种属反应性: Human, Mouse, Rat

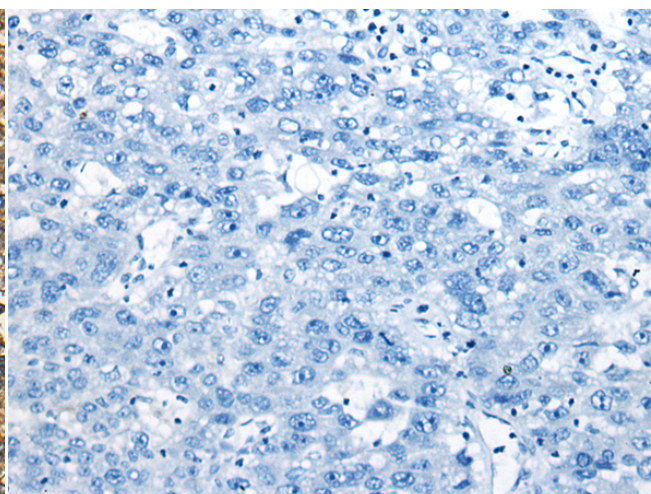
成分: PBS (without Mg²⁺ and Ca²⁺), pH 7.4, 150 mM NaCl, 0.05% Sodium Azide and 40% glycerol

研究领域: Signal Transduction

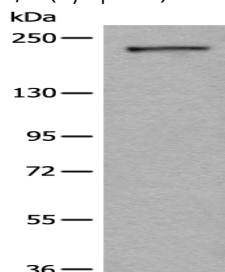
储存和运输: Store at -20°C. Avoid repeated freezing and thawing



Immunohistochemistry analysis of paraffin embedded Human liver cancer tissue using 221705 (CDC42BPA Antibody) at a dilution of 1/45 (Cytoplasm).



In comparison with the IHC on the left, the same paraffin-embedded Human liver cancer tissue is first treated with the synthetic peptide and then with 221705 (Anti-CDC42BPA Antibody) at dilution 1/45.



Gel: 6% SDS-PAGE, Lysate: 40 µg;

Lane: A172 cell lysate;

Primary antibody: 221705 (CDC42BPA Antibody) at dilution 1/600;

Secondary antibody: Goat anti rabbit IgG at 1/8000 dilution;

Exposure time: 5 minutes