

CDC27 RABBIT PAB

货号: S216406

产品全名: CDC27 兔多抗

基因符号: APC3; HNUC; NUC2; ANAPC3; CDC27Hs; D0S1430E; D17S978E

UNIPROT ID: P30260 (Gene Accession - BC011656)

背景: The protein encoded by this gene shares strong similarity with *Saccharomyces cerevisiae* protein Cdc27, and the gene product of *Schizosaccharomyces pombe* nuc 2. This protein is a component of anaphase-promoting complex (APC), which is composed of eight protein subunits and highly conserved in eucaryotic cells. APC catalyzes the formation of cyclin B-ubiquitin conjugate that is responsible for the ubiquitin-mediated proteolysis of B-type cyclins. This protein and 3 other members of the APC complex contain the TPR (tetratricopeptide repeat), a protein domain important for protein-protein interaction. This protein was shown to interact with mitotic checkpoint proteins including Mad2, p55CDC and BUBR1, and thus may be involved in controlling the timing of mitosis. Alternatively spliced transcript variants encoding different isoforms have been found for this gene.

抗原: Fusion protein of human CDC27

经过测试的应用: ELISA, IHC

推荐稀释比: IHC: 50-200; ELISA: 1000-5000

种属反应性: Rabbit

克隆性: Rabbit Polyclonal

亚型: Immunogen-specific rabbit IgG

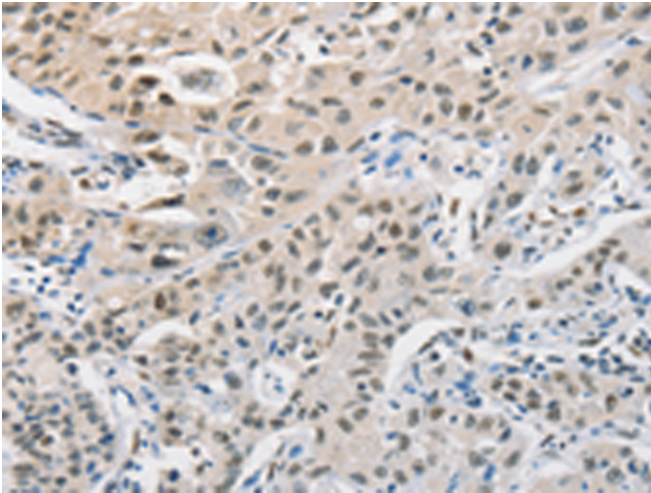
纯化: Antigen affinity purification

种属反应性: Human, Mouse, Rat

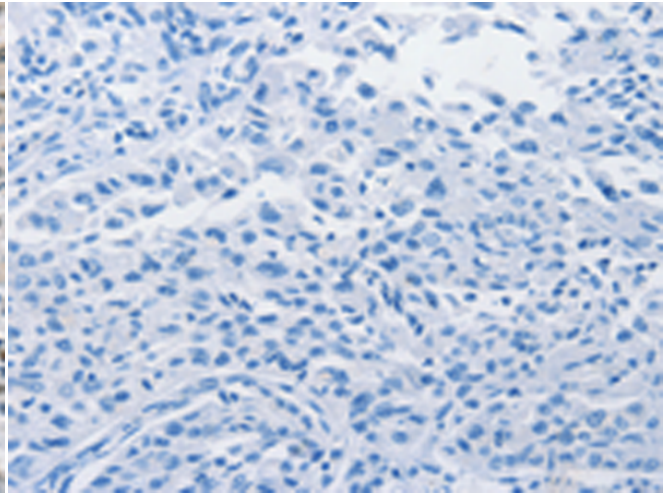
成分: PBS (without Mg²⁺ and Ca²⁺), pH 7.4, 150 mM NaCl, 0.05% Sodium Azide and 40% glycerol

研究领域: Cancer, Cell Biology

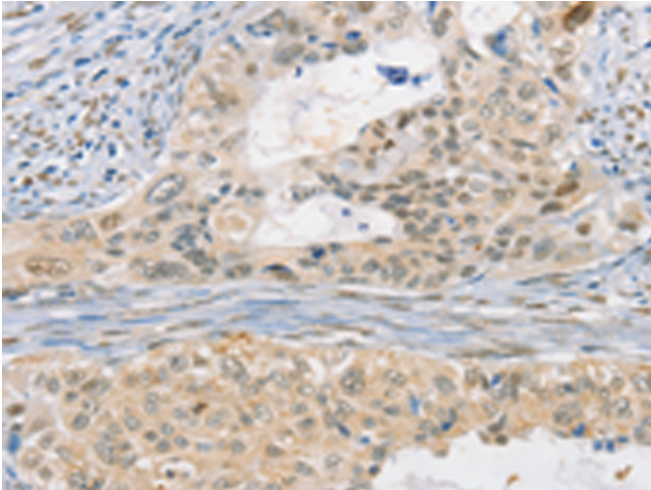
储存和运输: Store at -20°C. Avoid repeated freezing and thawing



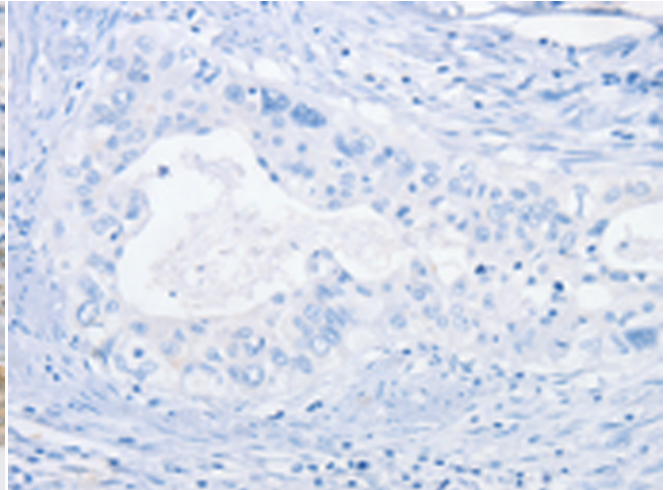
Immunohistochemistry analysis of paraffin embedded Human lung cancer tissue using 216406(CDC27 Antibody) at a dilution of 1/50(Nucleus).



In comparison with the IHC on the left, the same paraffin-embedded Human lung cancer tissue is first treated with the fusion protein and then with 216406(Anti-CDC27 Antibody) at dilution 1/50.



The image on the left is immunohistochemistry of paraffin-embedded Human cervical cancer tissue using 216406(Anti-CDC27 Antibody) at a dilution of 1/50.



In comparison with the IHC on the left, the same paraffin-embedded Human cervical cancer tissue is first treated with fusion protein and then with D220393(Anti-CDC27 Antibody) at dilution 1/50.