

## CDC23 RABBIT PAB

货号: S220117

产品全名: CDC23 兔多抗

基因符号: APC8; CUT23; ANAPC8

**UNIPROT ID:** Q9UJX2 (Gene Accession - NP\_004652)

**背景:** The protein encoded by this gene shares strong similarity with *Saccharomyces cerevisiae* Cdc23, a protein essential for cell cycle progression through the G2/M transition. This protein is a component of anaphase-promoting complex (APC), which is composed of eight protein subunits and highly conserved in eukaryotic cells. APC catalyzes the formation of cyclin B-ubiquitin conjugate that is responsible for the ubiquitin-mediated proteolysis of B-type cyclins. This protein and 3 other members of the APC complex contain the TPR (tetratricopeptide repeat), a protein domain important for protein-protein interaction.

**抗原:** Synthetic peptide of human CDC23

**经过测试的应用:** ELISA, IHC

**推荐稀释比:** IHC: 50-200; ELISA: 2000-5000

**种属反应性:** Rabbit

**克隆性:** Rabbit Polyclonal

**亚型:** Immunogen-specific rabbit IgG

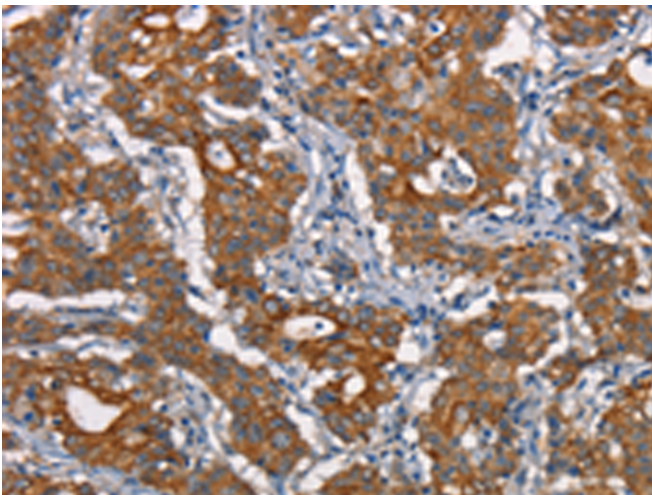
**纯化:** Antigen affinity purification

**种属反应性:** Human, Mouse

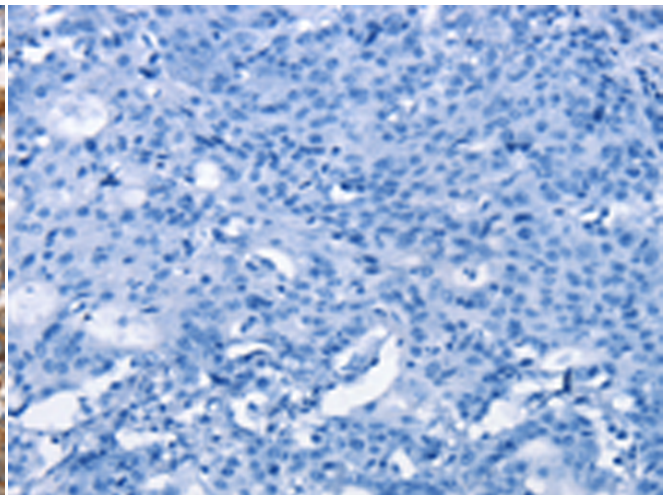
**成分:** PBS (without Mg<sup>2+</sup> and Ca<sup>2+</sup>), pH 7.4, 150 mM NaCl, 0.05% Sodium Azide and 40% glycerol

**研究领域:** Cancer, Cell Biology

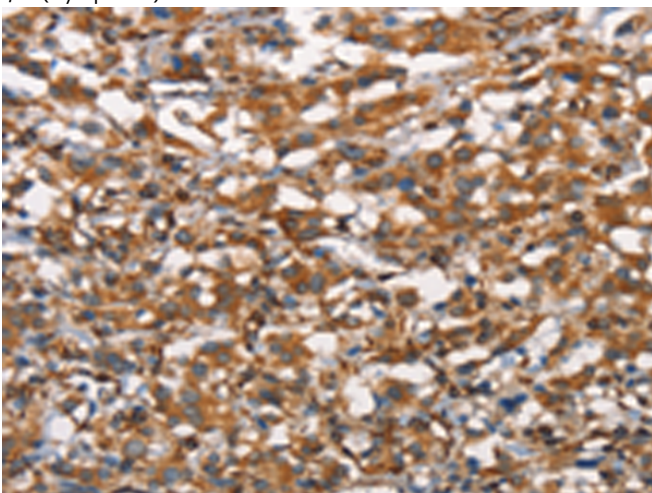
**储存和运输:** Store at -20°C. Avoid repeated freezing and thawing



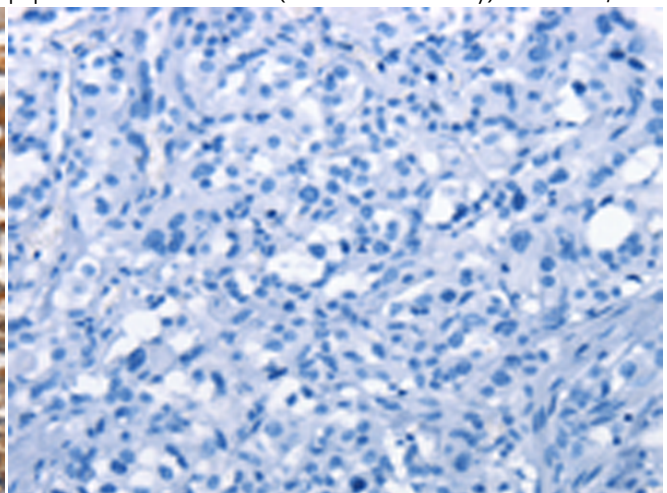
Immunohistochemistry analysis of paraffin embedded Human gastric cancer tissue using 220117(CDC23 Antibody) at a dilution of 1/50(Cytoplasm).



In comparison with the IHC on the left, the same paraffin-embedded Human gastric cancer tissue is first treated with the synthetic peptide and then with 220117(Anti-CDC23 Antibody) at dilution 1/50.



The image on the left is immunohistochemistry of paraffin-embedded Human thyroid cancer tissue using 220117(Anti-CDC23 Antibody) at a dilution of 1/50.



In comparison with the IHC on the left, the same paraffin-embedded Human thyroid cancer tissue is first treated with synthetic peptide and then with D260978(Anti-CDC23 Antibody) at dilution 1/50.



# Product Description

Pioneering GTPase and Oncogene Product Development since 2010

---