

CDC20 RABBIT PAB

货号: S219149

产品全名: CDC20 兔多抗

基因符号: CDC20A; p55CDC; bA276H19.3

UNIPROT ID: Q12834 (Gene Accession - BC000624)

背景: CDC20 appears to act as a regulatory protein interacting with several other proteins at multiple points in the cell cycle. It is required for two microtubule-dependent processes, nuclear movement prior to anaphase and chromosome separation.

抗原: Fusion protein of human CDC20

经过测试的应用: ELISA, IHC

推荐稀释比: IHC: 70-350; ELISA: 5000-10000

种属反应性: Rabbit

克隆性: Rabbit Polyclonal

亚型: Immunogen-specific rabbit IgG

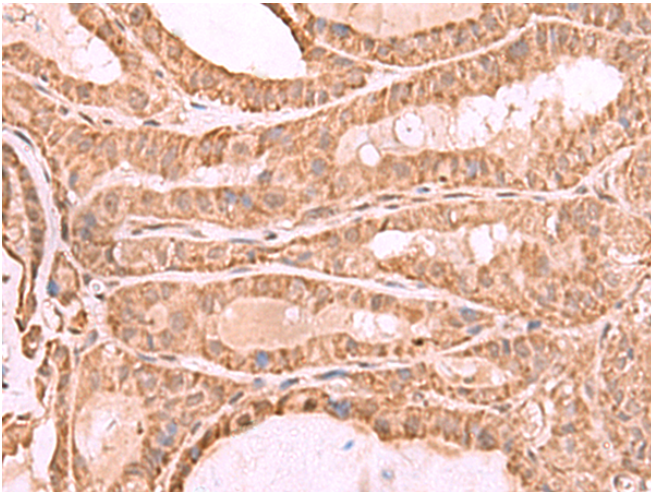
纯化: Antigen affinity purification

种属反应性: Human, Mouse, Rat

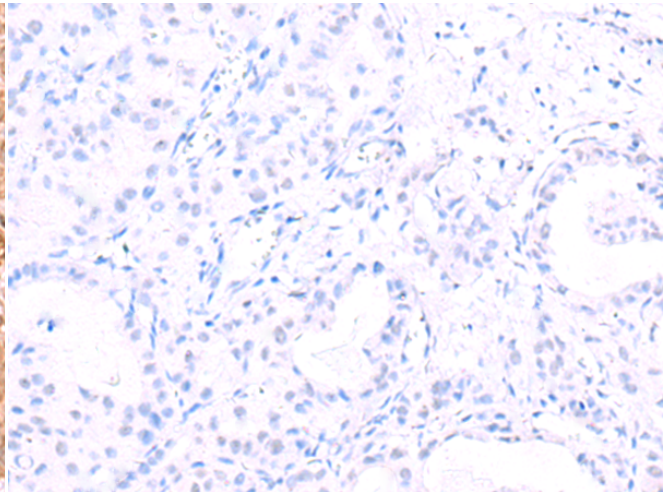
成分: PBS (without Mg²⁺ and Ca²⁺), pH 7.4, 150 mM NaCl, 0.05% Sodium Azide and 40% glycerol

研究领域: Cell Biology

储存和运输: Store at -20°C. Avoid repeated freezing and thawing



Immunohistochemistry analysis of paraffin embedded Human thyroid cancer tissue using 219149(CDC20 Antibody) at a dilution of 1/70(Cytoplasm and Nucleus).



In comparison with the IHC on the left, the same paraffin-embedded Human thyroid cancer tissue is first treated with the fusion protein and then with 219149(Anti-CDC20 Antibody) at dilution 1/70.