

CDC20 RABBIT PAB

货号: S216405

产品全名: CDC20 兔多抗

基因符号: CDC20A; p55CDC; bA276H19.3

UNIPROT ID: Q12834 (Gene Accession - BC010044)

背景: CDC20 appears to act as a regulatory protein interacting with several other proteins at multiple points in the cell cycle. It is required for two microtubule-dependent processes, nuclear movement prior to anaphase and chromosome separation.

抗原: Fusion protein of human CDC20

经过测试的应用: ELISA, WB, IHC

推荐稀释比: IHC: 200-400;WB: 1000-5000;ELISA: 5000-10000

种属反应性: Rabbit

克隆性: Rabbit Polyclonal

亚型: Immunogen-specific rabbit IgG

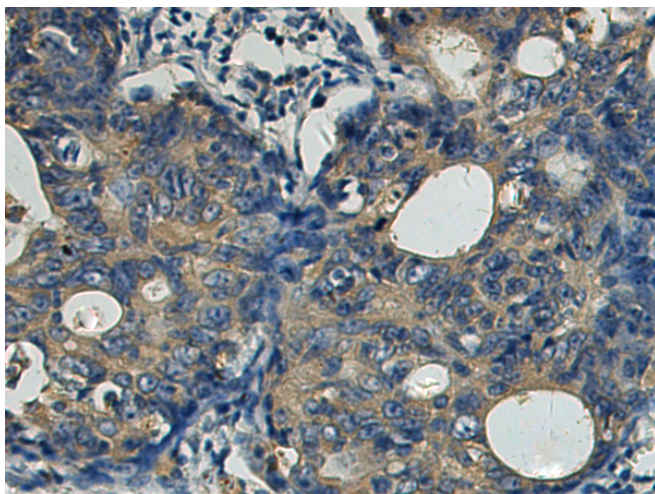
纯化: Antigen affinity purification

种属反应性: Human, Mouse, Rat

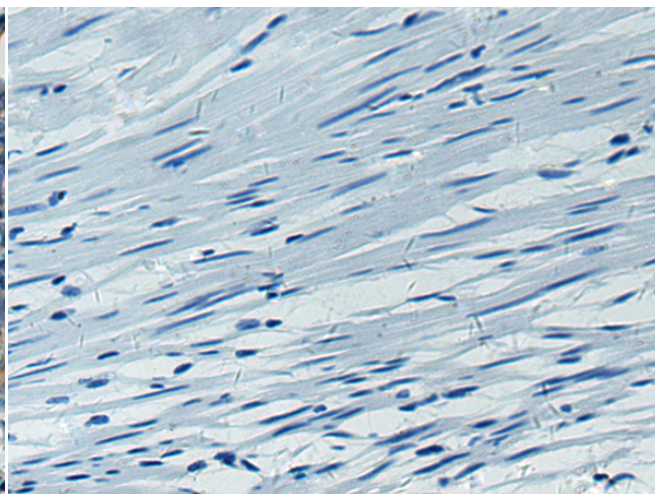
成分: PBS (without Mg²⁺ and Ca²⁺), pH 7.4, 150 mM NaCl, 0.05% Sodium Azide and 40% glycerol

研究领域: Cell Biology

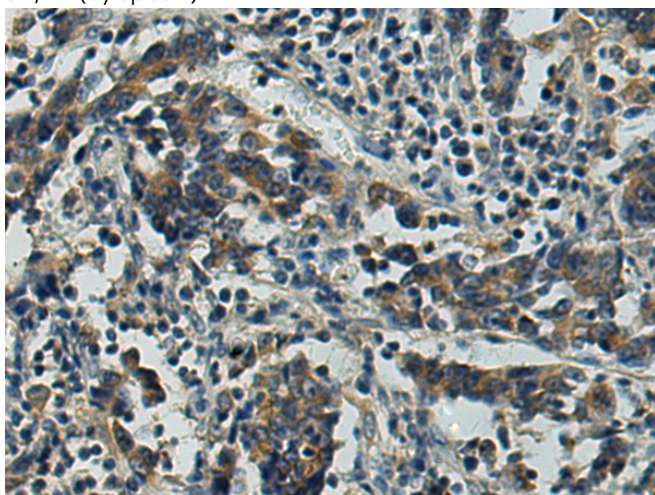
储存和运输: Store at -20°C. Avoid repeated freezing and thawing



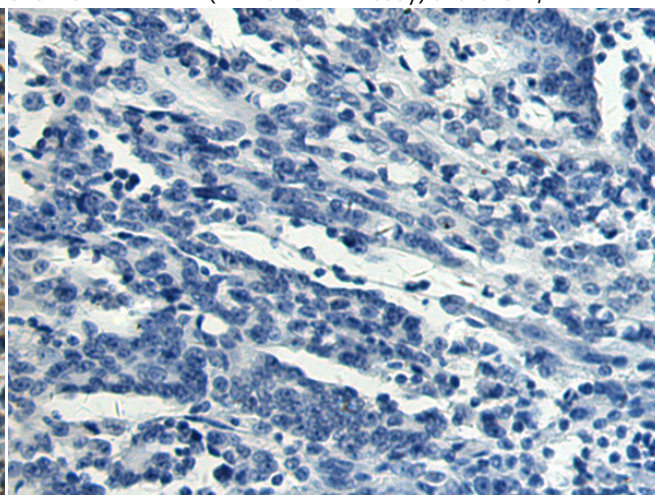
Immunohistochemistry analysis of paraffin embedded Human colorectal cancer tissue using 216405(CDC20 Antibody) at a dilution of 1/200(Cytoplasm).



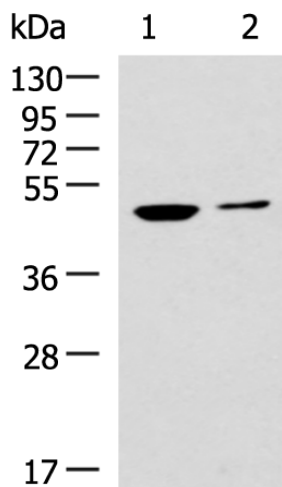
In comparison with the IHC on the left, the same paraffin-embedded Human colorectal cancer tissue is first treated with the fusion protein and then with 216405(Anti-CDC20 Antibody) at dilution 1/200.



The image on the left is immunohistochemistry of paraffin-embedded Human gastric cancer tissue using 216405(Anti-CDC20 Antibody) at a dilution of 1/200.



In comparison with the IHC on the left, the same paraffin-embedded Human gastric cancer tissue is first treated with fusion protein and then with D220392(Anti-CDC20 Antibody) at dilution 1/200.



Gel: 8%SDS-PAGE, Lysate: 40 µg;
 Lane 1-2: SKOV3 and Hela cell lysates;
 Primary antibody: 216405(CDC20 Antibody) at dilution 1/1000;
 Secondary antibody: HRP-conjugated Goat anti rabbit IgG at 1/5000 dilution;
 Exposure time: 30 seconds



Product Description

Pioneering GTPase and Oncogene Product Development since 2010
