

CDC16 RABBIT PAB

货号: S219588

产品全名: CDC16 兔多抗

基因符号: APC6; CUT9; ANAPC6; CDC16Hs

UNIPROT ID: Q13042 (Gene Accession - BC010875)

背景: The protein encoded by this gene functions as a protein ubiquitin ligase and is a component of the multiprotein APC complex. The APC complex is a cyclin degradation system that governs exit from mitosis by targeting cell cycle proteins for degradation by the 26S proteasome. Each component protein of the APC complex is highly conserved among eukaryotic organisms. This protein, and other APC complex proteins, contain a tetratricopeptide repeat (TPR) domain; a protein domain that is often involved in protein-protein interactions and the assembly of multiprotein complexes. Multiple alternatively spliced transcript variants, encoding distinct proteins, have been identified.

抗原: Fusion protein of human CDC16

经过测试的应用: ELISA, IHC

推荐稀释比: IHC: 50-200; ELISA: 5000-10000

种属反应性: Rabbit

克隆性: Rabbit Polyclonal

亚型: Immunogen-specific rabbit IgG

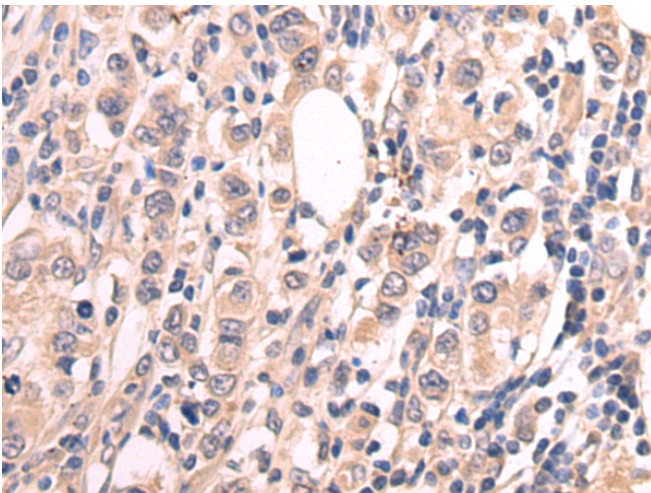
纯化: Antigen affinity purification

种属反应性: Human, Mouse

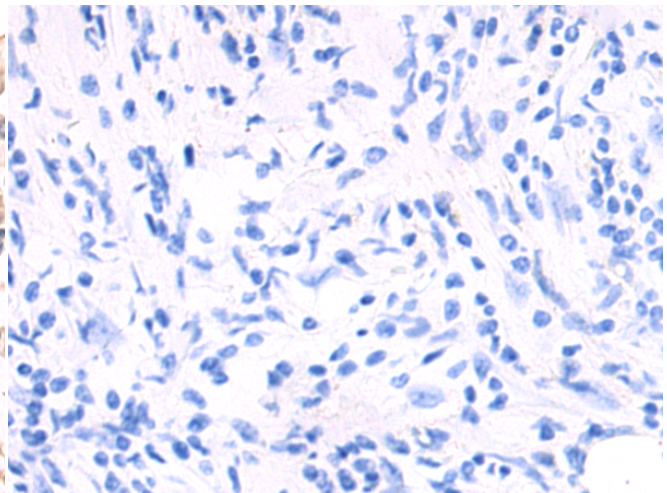
成分: PBS (without Mg²⁺ and Ca²⁺), pH 7.4, 150 mM NaCl, 0.05% Sodium Azide and 40% glycerol

研究领域: Cancer, Cell Biology

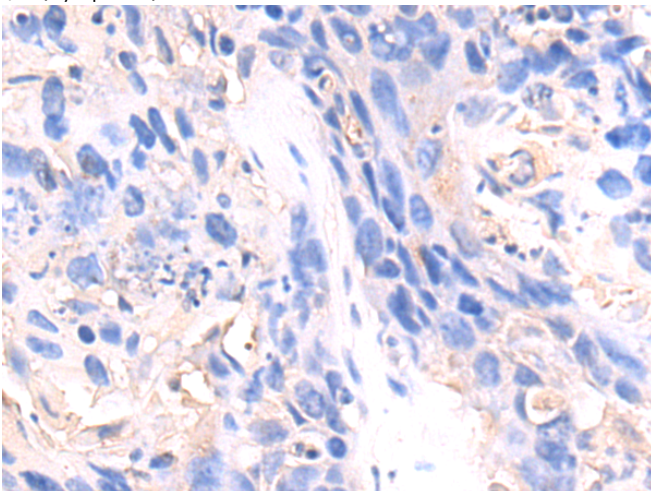
储存和运输: Store at -20°C. Avoid repeated freezing and thawing



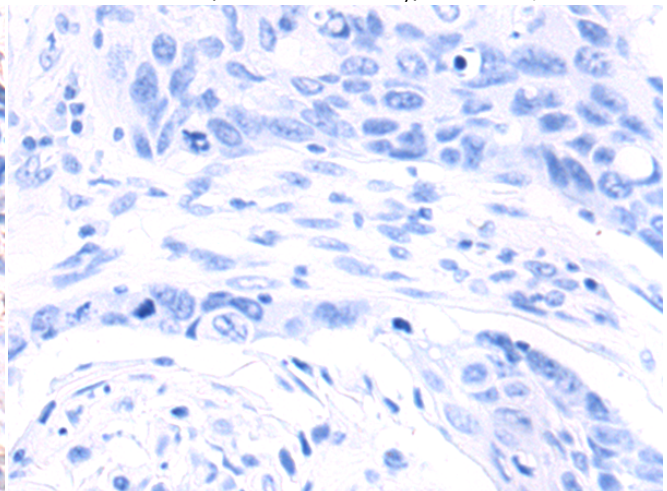
Immunohistochemistry analysis of paraffin embedded Human breast cancer tissue using 219588(CDC16 Antibody) at a dilution of 1/70(Cytoplasm).



In comparison with the IHC on the left, the same paraffin-embedded Human breast cancer tissue is first treated with the fusion protein and then with 219588(Anti-CDC16 Antibody) at dilution 1/70.



The image on the left is immunohistochemistry of paraffin-embedded Human lung cancer tissue using 219588(Anti-CDC16 Antibody) at a dilution of 1/70.



In comparison with the IHC on the left, the same paraffin-embedded Human lung cancer tissue is first treated with fusion protein and then with D227865(Anti-CDC16 Antibody) at dilution 1/70.



Product Description

Pioneering GTPase and Oncogene Product Development since 2010
