

CDC123 RABBIT MAB

货号: N263261

产品全名: CDC123 兔单克隆抗体

基因符号 C10orf7; CDC123; Cell division cycle 123; D123; HT 1080; PZ32

UNIPROT ID: O75794

背景: Required for S phase entry of the cell cycle.

抗原: A synthetic peptide of human CDC123

经过测试的应用: WB,IP

推荐稀释比: WB: 1/500-1/1000 IP: 1/20

种属反应性: Rabbit

克隆性: Rabbit Monoclonal

克隆编号: R06-8B6

分子量: Calculated MW: 39 kDa; Observed MW: 39 kDa

亚型: IgG

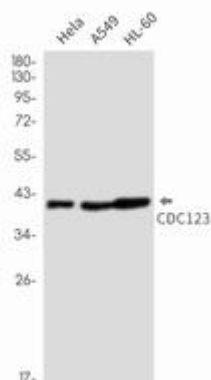
纯化: Affinity Purified

种属反应性: Human

成分: PBS (without Mg²⁺ and Ca²⁺), pH 7.3 containing 50% glycerol, 0.5% BSA and 0.02% sodium azide

研究领域: Cell Biology

储存和运输: Store at -20°C. Avoid repeated freezing and thawing



Western blot analysis of CDC123 in HeLa, A549, HL-60 lysates using CDC123 antibody.