

CDADC1 RABBIT PAB

货号: S218452

产品全名: CDADC1 兔多抗

基因符号: NYD-SP15; bA103J18.1

UNIPROT ID: Q9BWW3 (Gene Accession - BC009562)

背景: Enables several functions, including cytidine deaminase activity; importin-alpha family protein binding activity; and protein homodimerization activity. Involved in DNA cytosine deamination and cytidine deamination. Located in cytoplasm and nucleus.

抗原: Fusion protein of human CDADC1

经过测试的应用: ELISA, WB, IHC

推荐稀释比: IHC: 100-300;WB: 500-2000;ELISA: 5000-10000

种属反应性: Rabbit

克隆性: Rabbit Polyclonal

亚型: Immunogen-specific rabbit IgG

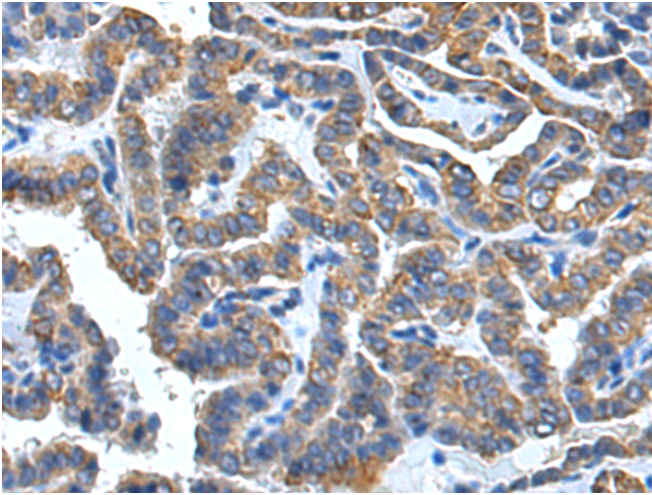
纯化: Antigen affinity purification

种属反应性: Human

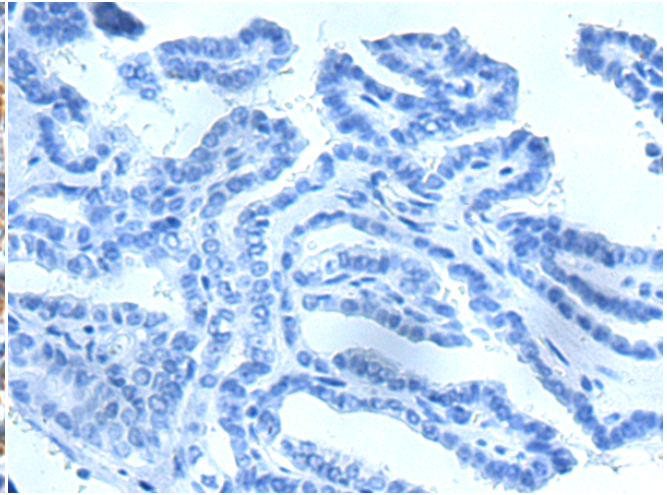
成分: PBS (without Mg²⁺ and Ca²⁺), pH 7.4, 150 mM NaCl, 0.05% Sodium Azide and 40% glycerol

研究领域: Metabolism

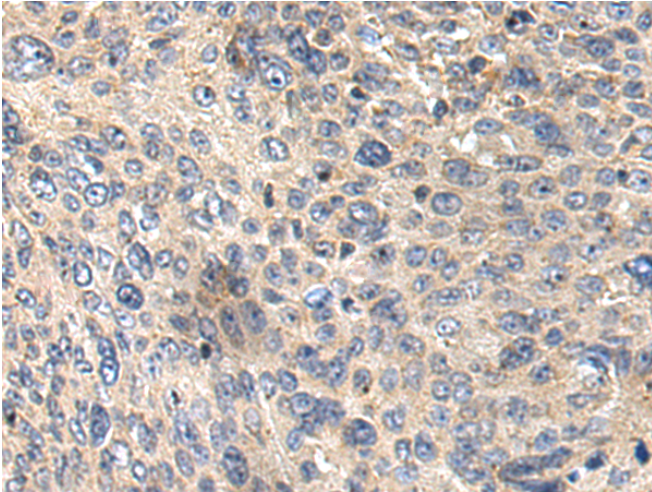
储存和运输: Store at -20°C. Avoid repeated freezing and thawing



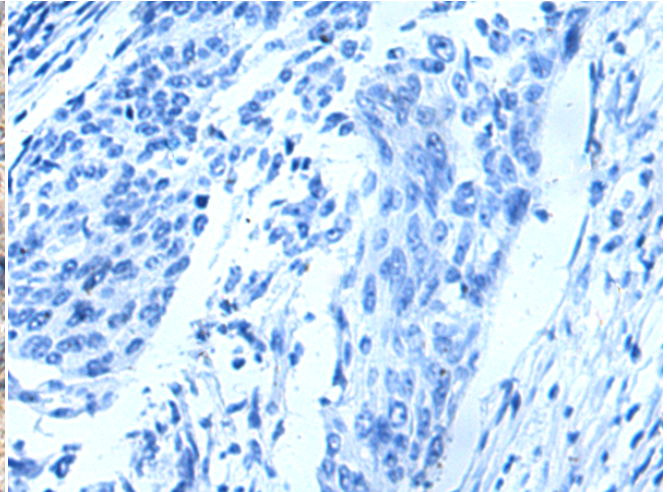
Immunohistochemistry analysis of paraffin embedded Human thyroid cancer tissue using 218452 (CDADC1 Antibody) at a dilution of 1/110 (Cytoplasm).



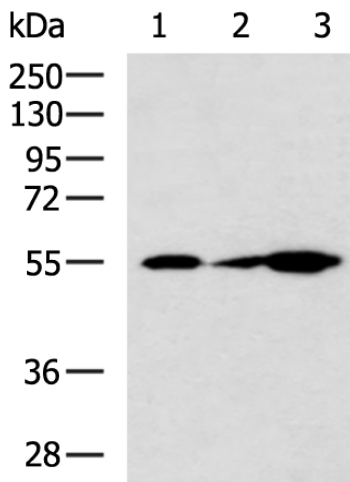
In comparison with the IHC on the left, the same paraffin-embedded Human thyroid cancer tissue is first treated with the fusion protein and then with 218452 (Anti-CDADC1 Antibody) at dilution 1/110.



The image on the left is immunohistochemistry of paraffin-embedded Human cervical cancer tissue using 218452 (Anti-CDADC1 Antibody) at a dilution of 1/110.



In comparison with the IHC on the left, the same paraffin-embedded Human cervical cancer tissue is first treated with fusion protein and then with D224483 (Anti-CDADC1 Antibody) at dilution 1/110.



Gel: 8%SDS-PAGE, Lysate: 40 µg;
 Lane 1-3: Human heart tissue, SP20 cell, Mouse heart tissue lysates;
 Primary antibody: 218452 (CDADC1 Antibody) at dilution 1/700;
 Secondary antibody: HRP-conjugated Goat anti rabbit IgG at 1/5000 dilution;
 Exposure time: 2 minutes



Product Description

Pioneering GTPase and Oncogene Product Development since 2010
