

## CD85F RABBIT PAB

货号: N225186

产品全名: CD85f 兔多抗

基因符号 LILRA5; ILT11; LILRB7; LIR9; Leukocyte immunoglobulin-like receptor subfamily A member 5; CD85 antigen-like family member F; Immunoglobulin-like transcript 11; ILT-11; Leukocyte immunoglobulin-like receptor 9; LIR-9; CD85f

**UNIPROT ID:** A6NI73

背景: May play a role in triggering innate immune responses.

抗原: The antiserum was produced against synthesized peptide derived from the Internal region of human LILRA5. AA range:141-190

经过测试的应用: WB,ELISA

推荐稀释比: WB: 1/500-1/1000 ELISA: 1/10000

种属反应性: Rabbit

克隆性: Rabbit Polyclonal

分子量: Calculated MW: 33 kDa; Observed MW: 33 kDa

亚型: IgG

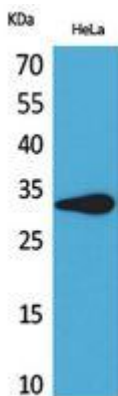
纯化: Affinity Purified

种属反应性: Human

成分: PBS (without Mg<sup>2+</sup> and Ca<sup>2+</sup>), pH 7.3 containing 50% glycerol, 0.5% BSA and 0.02% sodium azide

研究领域: Immunology

储存和运输: Store at -20°C. Avoid repeated freezing and thawing



Western blot analysis of CD85f in HeLa lysates using CD85f antibody.