

## CD8 ALPHA RABBIT PAB

货号: N225649

产品全名: CD8 alpha 兔多抗

基因符号 CD8A; MAL; T-cell surface glycoprotein CD8 alpha chain; T-lymphocyte differentiation antigen T8/Leu-2; CD antigen CD8a

**UNIPROT ID:** P01732

**背景:** Identifies cytotoxic/suppressor T-cells that interact with MHC class I bearing targets. CD8 is thought to play a role in the process of T-cell mediated killing. CD8 alpha chains binds to class I MHC molecules alpha-3 domains.

**抗原:** A synthesized peptide derived from human CD8

**经过测试的应用:** WB,IHC-P,ICC/IF

**推荐稀释比:** WB: 1/500-1/1000 IHC: 1/50-1/100 IF: 1/50-1/200

**种属反应性:** Rabbit

**克隆性:** Rabbit Polyclonal

**分子量:** Calculated MW: 26 kDa; Observed MW: 32 kDa

**亚型:** IgG

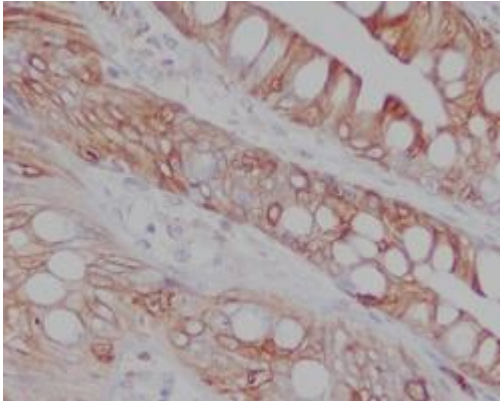
**纯化:** Affinity Chromatography

**种属反应性:** Human

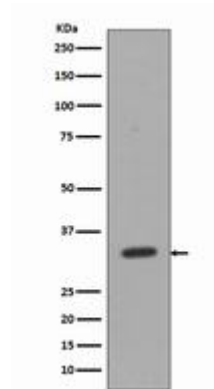
**成分:** PBS (without Mg<sup>2+</sup> and Ca<sup>2+</sup>), pH 7.3 containing 50% glycerol, 0.5% BSA and 0.02% sodium azide

**研究领域:** Immunology

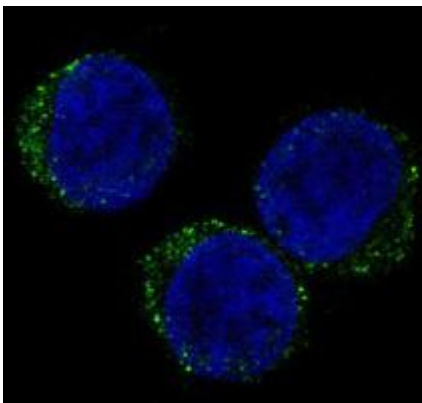
**储存和运输:** Store at -20°C. Avoid repeated freezing and thawing



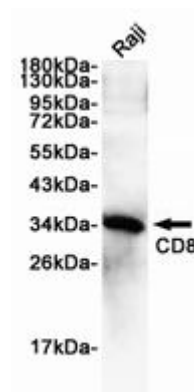
Immunohistochemistry analysis of paraffin-embedded Human colon using CD8 antibody. High-pressure and temperature Sodium Citrate pH 6.0 was used for antigen retrieval.



Western blot analysis of CD8 in Jurkat lysates using CD8 alpha antibody.



Immunofluorescence analysis of CD8 alpha in Jurkat using CD8 antibody.



Western blot analysis of CD8 alpha in Raji lysates using CD8 antibody.