

CD8 ALPHA RABBIT MAB

货号: N261738

产品全名: CD8 alpha 兔单克隆抗体

基因符号 CD8A; MAL; T-cell surface glycoprotein CD8 alpha chain; T-lymphocyte differentiation antigen T8/Leu-2; CD antigen CD8a

UNIPROT ID: P01732

背景: Identifies cytotoxic/suppressor T-cells that interact with MHC class I bearing targets. CD8 is thought to play a role in the process of T-cell mediated killing. CD8 alpha chains binds to class I MHC molecules alpha-3 domains.

抗原: A synthetic peptide of human CD8

经过测试的应用: WB,IHC-P

推荐稀释比: WB: 1/500-1/1000 IHC: 1/50-1/100

种属反应性: Rabbit

克隆性: Rabbit Monoclonal

克隆编号: R09-8E7

分子量: Calculated MW: 26 kDa; Observed MW: 29 kDa

亚型: IgG

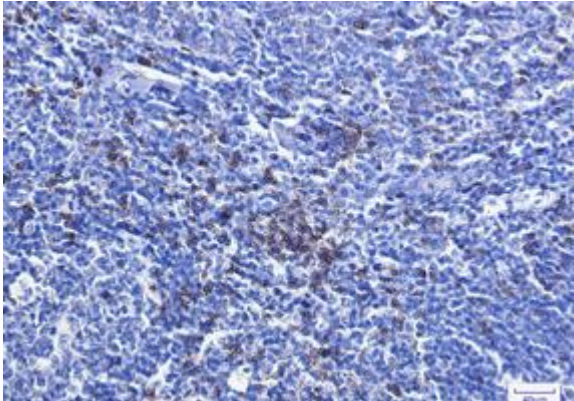
纯化: Affinity Purified

种属反应性: Human,Hamster


成分: PBS (without Mg²⁺ and Ca²⁺), pH 7.3 containing 50% glycerol, 0.5% BSA and 0.02% sodium azide

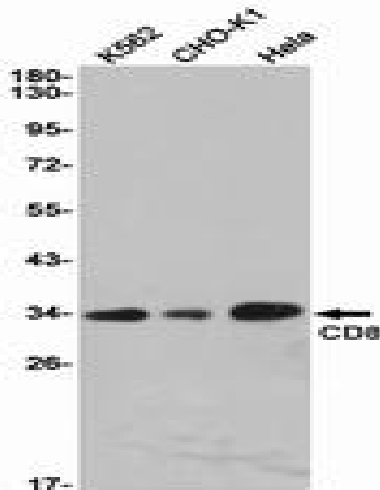
研究领域: Immunology

储存和运输: Store at -20°C. Avoid repeated freezing and thawing



Immunohistochemistry analysis of paraffin-embedded Human tonsil using CD8 antibody. High-pressure and temperature Sodium Citrate pH 6.0 was used for antigen retrieval.

 Western blot analysis of CD8 in THP-1 lysates using CD8 alpha antibody.



Western blot analysis of CD8 in K562, CHO-K1, Hela lysates using CD8 antibody.