

CD68 (9H5) MOUSE MAB

货号: N261213

产品全名: CD68 (9H5) 小鼠单抗

基因符号 CD68; Macrosialin; Gp110; CD68

UNIPROT ID: P34810

背景: CD68 belongs to a family of acidic, highly glycosylated lysosomal glycoproteins (LGPs) that includes lamp-1 and lamp-2. Play a role in phagocytic activities of tissue macrophages, both in intracellular lysosomal metabolism and extracellular cell-cell and cell-pathogen interactions.

抗原: Synthetic Peptide of CD68

经过测试的应用: IHC-P, ICC/IF

推荐稀释比: IHC: 1/50-1/100 IF: 1/50-1/200

种属反应性: Mouse

克隆性: Mouse Monoclonal

克隆编号: 9H5-7F9-1B9

分子量: -

亚型: IgG1

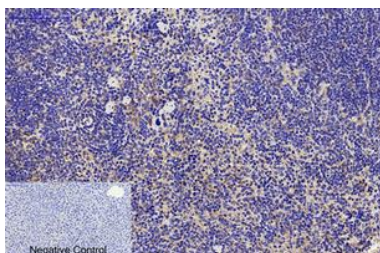
纯化: Affinity Purified

种属反应性: Human, Mouse

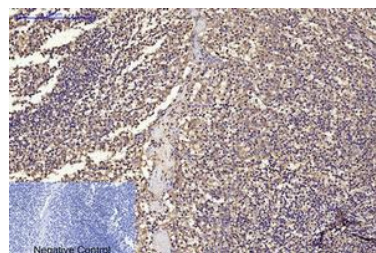
成分: PBS (without Mg²⁺ and Ca²⁺), pH 7.3 containing 50% glycerol, 0.5% BSA and 0.02% sodium azide

研究领域: Immunology

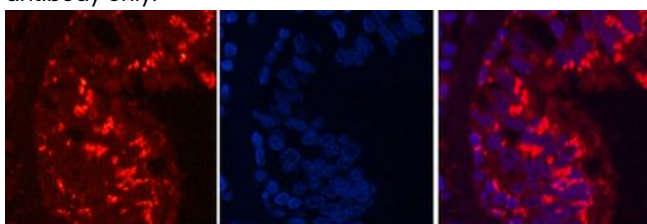
储存和运输: Store at -20°C. Avoid repeated freezing and thawing



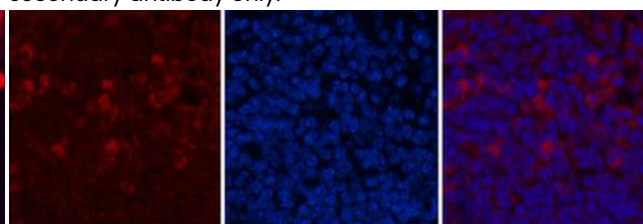
Immunohistochemical analysis of paraffin-embedded Human tonsils using CD68 (9H5) antibody. High-pressure and temperature Sodium Citrate pH 6.0 was used for antigen retrieval. Negative control was used by secondary antibody only.



Immunohistochemistry analysis of paraffin-embedded Human Tonsil tissue using CD68 (9H5) antibody. High-pressure and temperature Sodium Citrate pH 6.0 was used for antigen retrieval. Negative control was used by secondary antibody only.



Immunofluorescence analysis of CD68 (9H5) in Human lung cancer tissue using CD68 (9H5) antibody (red) and DAPI (blue).



Immunofluorescence analysis of CD68 (9H5) in mouse spleen tissue using CD68 (9H5) antibody (6F3) (red), and DAPI (blue).