

CD52 RABBIT PAB

货号: S222367

产品全名: CD52 兔多抗

基因符号: HE5; CDW52; EDDM5

UNIPROT ID: P31358 (Gene Accession - NP_001794)

背景: May play a role in carrying and orienting carbohydrate, as well as having a more specific role.

抗原: Synthetic peptide of human CD52

经过测试的应用: ELISA, IHC

推荐稀释比: IHC: 50-200; ELISA: 5000-10000

种属反应性: Rabbit

克隆性: Rabbit Polyclonal

亚型: Immunogen-specific rabbit IgG

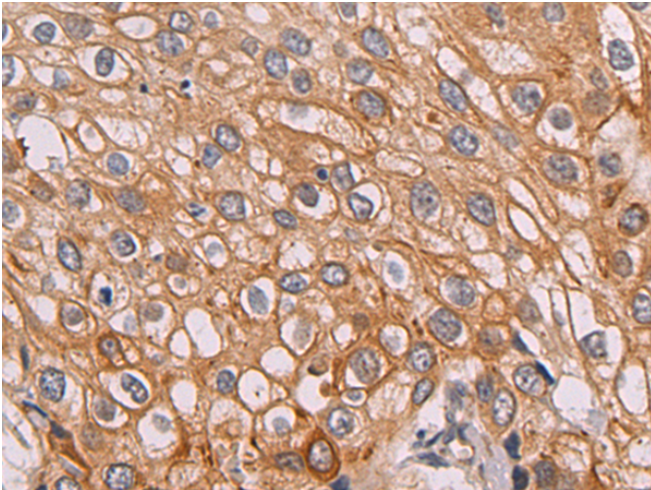
纯化: Antigen affinity purification

种属反应性: Human

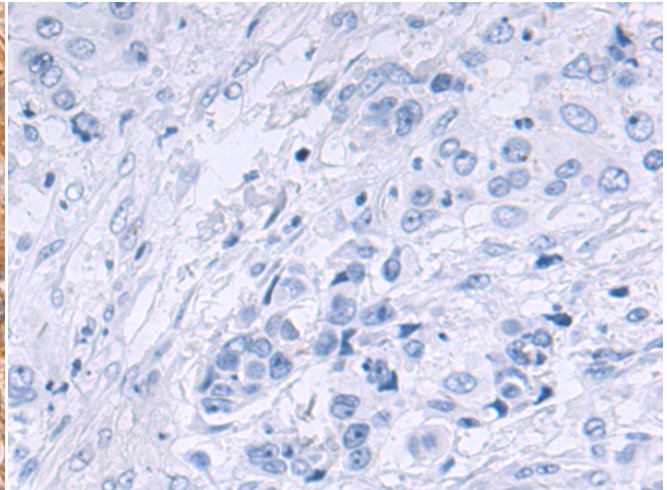
成分: PBS (without Mg²⁺ and Ca²⁺), pH 7.4, 150 mM NaCl, 0.05% Sodium Azide and 40% glycerol

研究领域: Immunology

储存和运输: Store at -20°C. Avoid repeated freezing and thawing



Immunohistochemistry analysis of paraffin embedded Human cervical cancer tissue using 222367(CD52 Antibody) at a dilution of 1/50(Cell membrane).



In comparison with the IHC on the left, the same paraffin-embedded Human cervical cancer tissue is first treated with the synthetic peptide and then with 222367(Anti-CD52 Antibody) at dilution 1/50.