

CD38 RABBIT PAB

货号: S220439

产品全名: CD38 兔多抗

基因符号: TIO

UNIPROT ID: P28907 (Gene Accession - NP_001766)

背景: CD38 is a novel multifunctional ectoenzyme widely expressed in cells and tissues especially in leukocytes. CD38 also functions in cell adhesion, signal transduction and calcium signaling. Synthesizes cyclic ADP-ribose, a second messenger for glucose-induced insulin secretion. Also has cADPr hydrolase activity. Also moonlights as a receptor in cells of the immune system.

抗原: Synthetic peptide of human CD38

经过测试的应用: ELISA, WB, IHC

推荐稀释比: IHC: 50-200; WB: 500-2000; ELISA: 1000-5000

种属反应性: Rabbit

克隆性: Rabbit Polyclonal

亚型: Immunogen-specific rabbit IgG

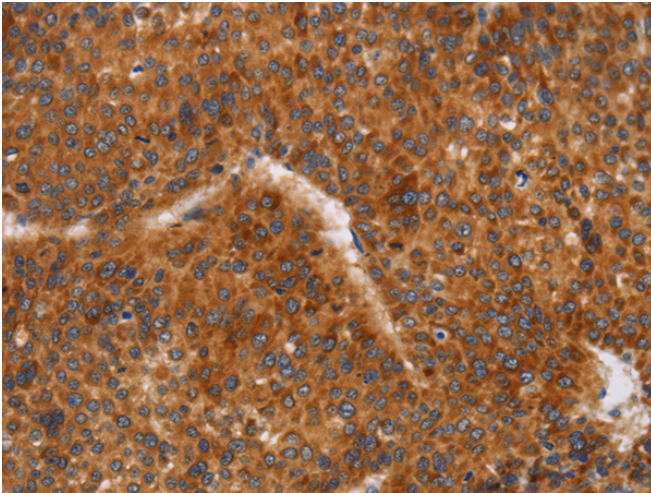
纯化: Antigen affinity purification

种属反应性: Human

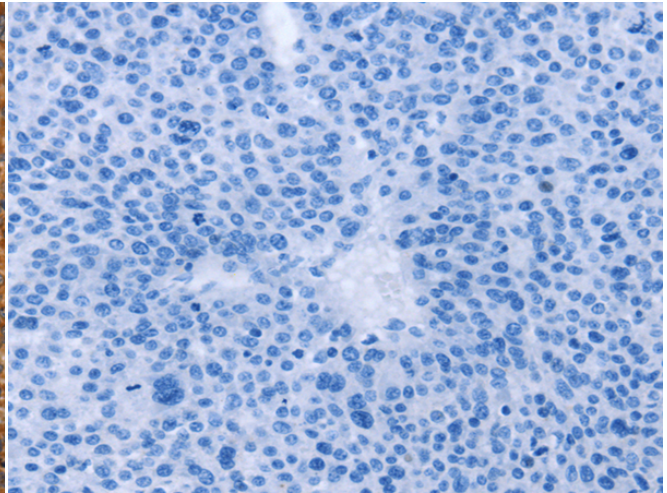
成分: PBS (without Mg²⁺ and Ca²⁺), pH 7.4, 150 mM NaCl, 0.05% Sodium Azide and 40% glycerol

研究领域: Cancer, Cardiovascular, Metabolism, Immunology, Stem Cells

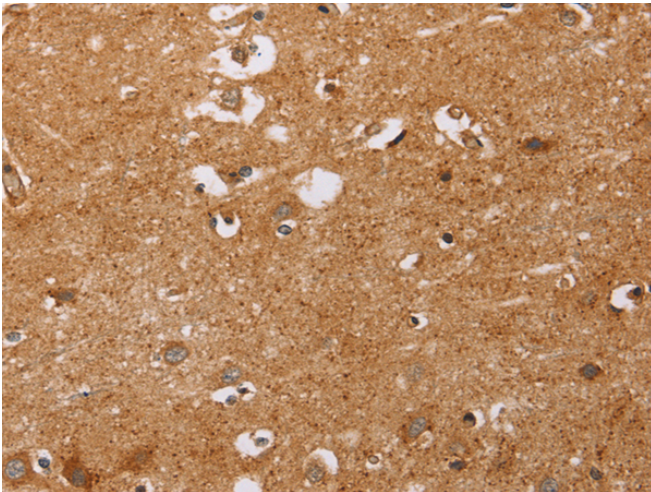
储存和运输: Store at -20°C. Avoid repeated freezing and thawing



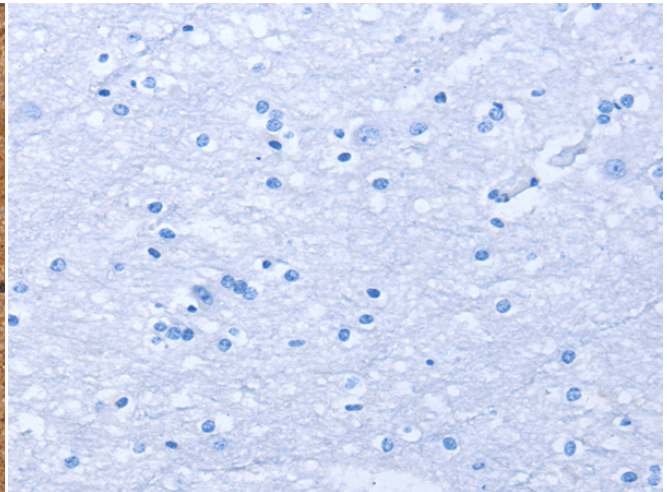
Immunohistochemistry analysis of paraffin embedded Human liver cancer tissue using 220439(CD38 Antibody) at a dilution of 1/60(Cytoplasm).



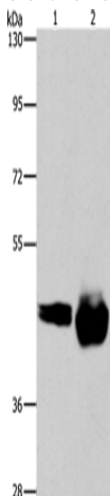
In comparison with the IHC on the left, the same paraffin-embedded Human liver cancer tissue is first treated with the synthetic peptide and then with 220439(Anti-CD38 Antibody) at dilution 1/60.



The image on the left is immunohistochemistry of paraffin-embedded Human brain tissue using 220439(Anti-CD38 Antibody) at a dilution of 1/60.



In comparison with the IHC on the left, the same paraffin-embedded Human brain tissue is first treated with synthetic peptide and then with D261531(Anti-CD38 Antibody) at dilution 1/60.



Gel: 6%SDS-PAGE, Lysate: 40 µg;
Lane 1-2: A549 cells, Raji cells;
Primary antibody: 220439(CD38 Antibody) at dilution 1/520;
Secondary antibody: Goat anti rabbit IgG at 1/8000 dilution;
Exposure time: 3 minutes



Product Description

Pioneering GTPase and Oncogene Product Development since 2010
