

CD32 RABBIT MAB

货号: N261996

产品全名: CD32 兔单克隆抗体

基因符号 FCGR2A; CD32; FCG2; FCGR2A1; IGFR2; Low affinity immunoglobulin gamma Fc region receptor II- α ; IgG Fc receptor II- α ; CDw32; Fc-gamma RII- α ; Fc-gamma-RII α ; FcRII- α ; CD32

UNIPROT ID: P12318

背景: Binds to the Fc region of immunoglobulins gamma. Low affinity receptor. By binding to IgG it initiates cellular responses against pathogens and soluble antigens.

抗原: A synthetic peptide of human CD32

经过测试的应用: WB,IHC-P

推荐稀释比: WB: 1/500-1/1000 IHC: 1/50-1/100

种属反应性: Rabbit

克隆性: Rabbit Monoclonal

克隆编号: R09-5D1

分子量: Calculated MW: 35 kDa; Observed MW: 35-42 kDa

亚型: IgG

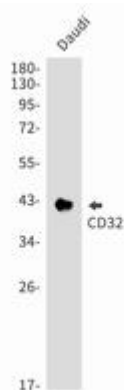
纯化: Affinity Purified

种属反应性: Human

成分: PBS (without Mg²⁺ and Ca²⁺), pH 7.3 containing 50% glycerol, 0.5% BSA and 0.02% sodium azide

研究领域: Tags & Cell Markers

储存和运输: Store at -20°C. Avoid repeated freezing and thawing



Western blot analysis of CD32 in Daudi lysates using CD32 antibody.



Product Description

Pioneering GTPase and Oncogene Product Development since 2010
