

CD300LG RABBIT PAB

货号: N225109

产品全名: CD300LG 兔多抗

基因符号 CD300LG; CLM9; TREM4; CMRF35-like molecule 9; CLM-9;
CD300 antigen-like family member G; Triggering receptor expressed on
myeloid cells 4; TREM-4; CD300g

UNIPROT ID: Q6UXG3

背景: Receptor which may mediate L-selectin-dependent lymphocyte
rollings.

抗原: The antiserum was produced against synthesized peptide
derived from the Internal region of human CD300LG. AA range:41-90

经过测试的应用: WB,IHC-P,ELISA

推荐稀释比: WB: 1/500-1/1000 IHC: 1/50-1/100 ELISA: 1/10000

种属反应性: Rabbit

克隆性: Rabbit Polyclonal

分子量: Calculated MW: 36 kDa; Observed MW: 36 kDa

亚型: IgG

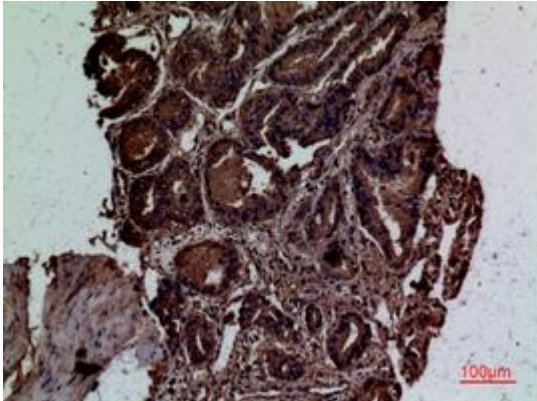
纯化: Affinity Purified

种属反应性: Human

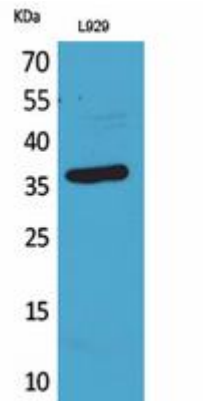
成分: PBS (without Mg²⁺ and Ca²⁺), pH 7.3 containing 50% glycerol,
0.5% BSA and 0.02% sodium azide

研究领域: Immunology

储存和运输: Store at -20°C. Avoid repeated freezing and thawing



Immunohistochemistry analysis of paraffin-embedded Human prostate cancer using CD300LG antibody. High-pressure and temperature Sodium Citrate pH 6.0 was used for antigen retrieval.



Western blot analysis of CD300LG in L929 lysates using CD300LG antibody.