

## CD300B RABBIT PAB

货号: N225140

产品全名: CD300b 兔多抗

基因符号 CMRF35-like molecule 7; CLM-7; CD300 antigen-like family member B; CMRF35-A2; Immune receptor expressed on myeloid cells 3; IREM-3; Leukocyte mono-Ig-like receptor 5; Triggering receptor expressed on myeloid cells 5; TREM-5; CD antigen CD300b

**UNIPROT ID:** A8K4G0

背景: Acts as an activating immune receptor through its interaction with ITAM-bearing adapter TYROBP, and also independently by recruitment of GRB2.

抗原: Synthetic peptide from human protein at AA range: 61-110

经过测试的应用: IHC-P,ELISA

推荐稀释比: IHC: 1/50-1/100 ELISA: 1/10000

种属反应性: Rabbit

克隆性: Rabbit Polyclonal

分子量: -

亚型: IgG

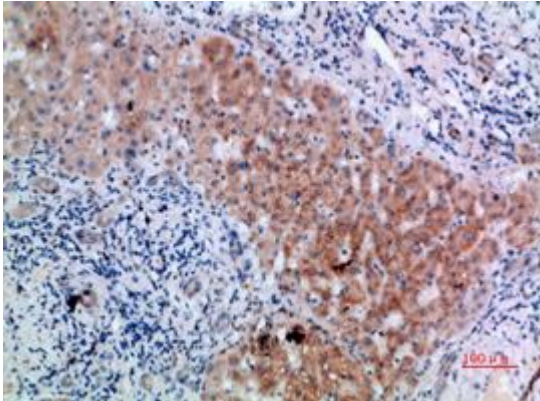
纯化: Affinity Purified

种属反应性: Human

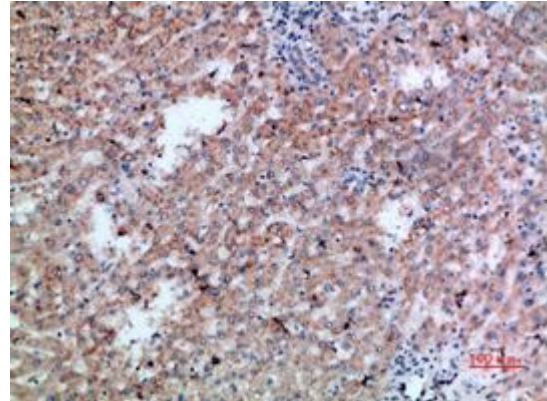
成分: PBS (without Mg<sup>2+</sup> and Ca<sup>2+</sup>), pH 7.3 containing 50% glycerol, 0.5% BSA and 0.02% sodium azide

研究领域: Immunology

储存和运输: Store at -20°C. Avoid repeated freezing and thawing



Immunohistochemical analysis of paraffin-embedded Human tonsils using CD300b antibody. High-pressure and temperature Sodium Citrate pH 6.0 was used for antigen retrieval.



Immunohistochemistry analysis of paraffin-embedded Human liver cancer using CD300b antibody. High-pressure and temperature Sodium Citrate pH 6.0 was used for antigen retrieval.