

## CD3 EPSILON RABBIT MAB

货号: N261993

产品全名: CD3 epsilon 兔单克隆抗体

基因符号 CD3E; T3E; T-cell surface glycoprotein CD3 epsilon chain; T-cell surface antigen T3/Leu-4 epsilon chain; CD3e

**UNIPROT ID:** P07766

**背景:** The CD3 complex mediates signal transduction. When T cells encounter antigens via the T cell receptor (TCR), information about the quantity and quality of antigens is relayed to the intracellular signal transduction machinery. This activation process depends mainly on CD3 (Cluster of Differentiation 3), a multiunit protein complex that directly associates with the TCR. CD3 is composed of four polypeptides:  $\zeta$ ,  $\gamma$ ,  $\epsilon$  and  $\delta$ .

**抗原:** A synthetic peptide of human CD3 epsilon

**经过测试的应用:** WB,IP

**推荐稀释比:** WB: 1/500-1/1000 IP: 1/20

**种属反应性:** Rabbit

**克隆性:** Rabbit Monoclonal

**克隆编号:** R08-7B1

**分子量:** Calculated MW: 23 kDa; Observed MW: 23 kDa

**亚型:** IgG

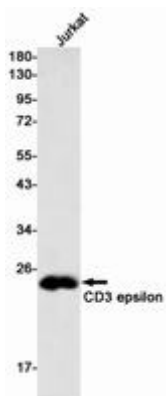
**纯化:** Affinity Purified

**种属反应性:** Human

**成分:** PBS (without Mg<sup>2+</sup> and Ca<sup>2+</sup>), pH 7.3 containing 50% glycerol, 0.5% BSA and 0.02% sodium azide

**研究领域:** Immunology

**储存和运输:** Store at -20°C. Avoid repeated freezing and thawing



Western blot analysis of CD3 epsilon in Jurkat lysates using CD3 epsilon antibody.



# Product Description

Pioneering GTPase and Oncogene Product Development since 2010

---