

## CD2AP RABBIT PAB

货号: S220433

产品全名: CD2AP 兔多抗

基因符号: CMS

**UNIPROT ID:** Q9Y5K6 (Gene Accession - NP\_036252 )

**背景:** This gene encodes a scaffolding molecule that regulates the actin cytoskeleton. The protein directly interacts with filamentous actin and a variety of cell membrane proteins through multiple actin binding sites, SH3 domains, and a proline-rich region containing binding sites for SH3 domains. The cytoplasmic protein localizes to membrane ruffles, lipid rafts, and the leading edges of cells. It is implicated in dynamic actin remodeling and membrane trafficking that occurs during receptor endocytosis and cytokinesis. Haploinsufficiency of this gene is implicated in susceptibility to glomerular disease.

**抗原:** Synthetic peptide of human CD2AP

**经过测试的应用:** ELISA, WB, IHC

**推荐稀释比:** IHC: 100-300;WB: 1000-5000;ELISA: 2000-10000

**种属反应性:** Rabbit

**克隆性:** Rabbit Polyclonal

**亚型:** Immunogen-specific rabbit IgG

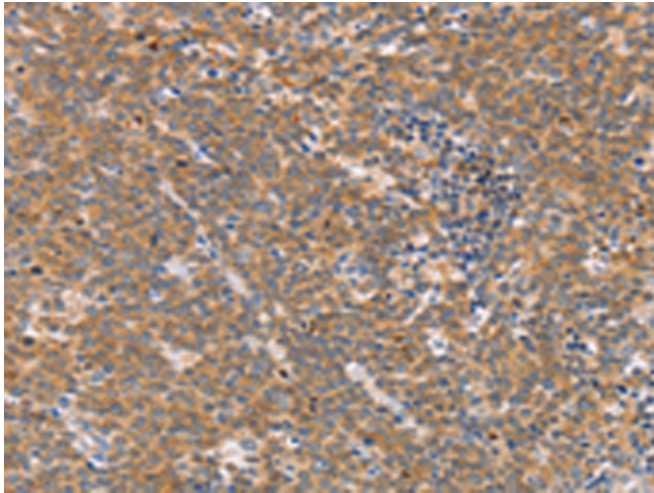
**纯化:** Antigen affinity purification

**种属反应性:** Human

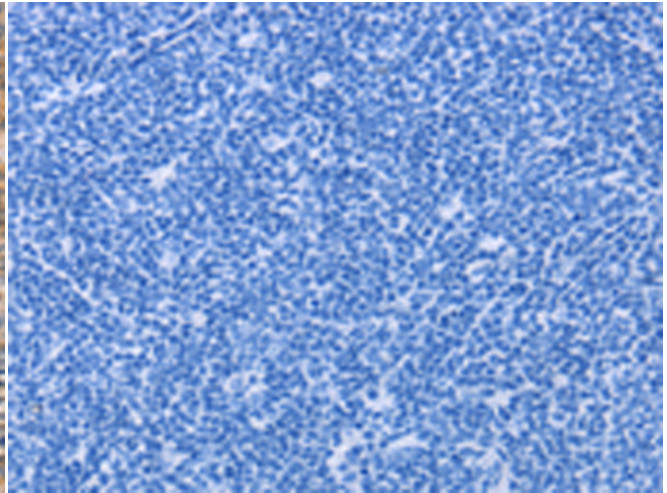
**成分:** PBS (without Mg<sup>2+</sup> and Ca<sup>2+</sup>), pH 7.4, 150 mM NaCl, 0.05% Sodium Azide and 40% glycerol

**研究领域:** Signal Transduction

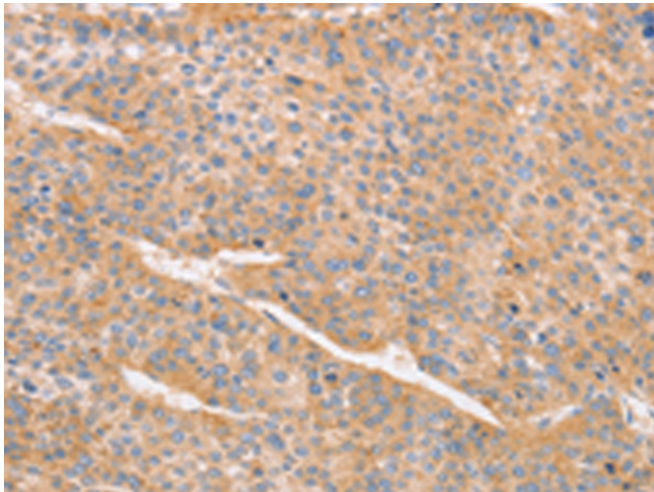
**储存和运输:** Store at -20°C. Avoid repeated freezing and thawing



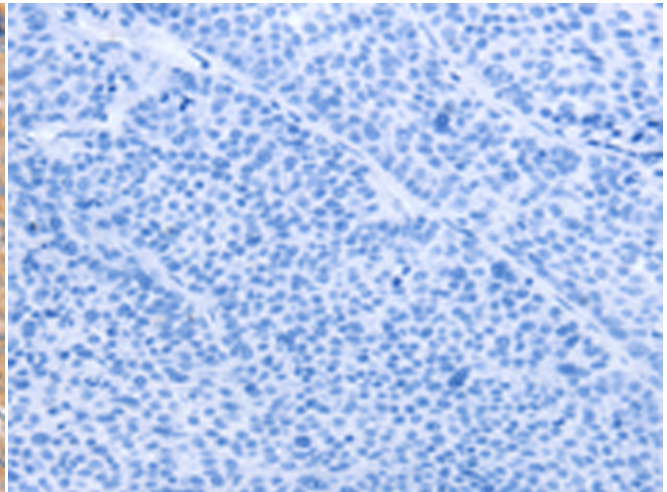
Immunohistochemistry analysis of paraffin embedded Human Lymphoma tissue using 220433(CD2AP Antibody) at a dilution of 1/70(Cytoplasm).



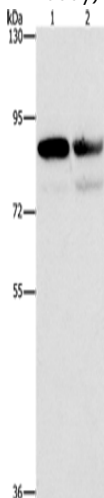
In comparison with the IHC on the left, the same paraffin-embedded Human Lymphoma tissue is first treated with the synthetic peptide and then with 220433(Anti-CD2AP Antibody) at dilution 1/70.



The image on the left is immunohistochemistry of paraffin-embedded Human liver cancer tissue using 220433(Anti-CD2AP Antibody) at a dilution of 1/70.



In comparison with the IHC on the left, the same paraffin-embedded Human liver cancer tissue is first treated with synthetic peptide and then with D261523(Anti-CD2AP Antibody) at dilution 1/70.



Gel: 6%SDS-PAGE, Lysate: 40 µg;  
Lane 1-2: A431 cells, Raji cells;  
Primary antibody: 220433(CD2AP Antibody) at dilution 1/1000;  
Secondary antibody: Goat anti rabbit IgG at 1/8000 dilution;  
Exposure time: 1 second



# Product Description

Pioneering GTPase and Oncogene Product Development since 2010

---