

CD24 RABBIT PAB

货号: S220432

产品全名: CD24 兔多抗

基因符号: CD24A

UNIPROT ID: P25063 (Gene Accession - NP_037362)

背景: This gene encodes a sialoglycoprotein that is expressed on mature granulocytes and B cells and modulates growth and differentiation signals to these cells. The precursor protein is cleaved to a short 32 amino acid mature peptide which is anchored via a glycosyl phosphatidylinositol (GPI) link to the cell surface. This gene was missing from previous genome assemblies, but is properly located on chromosome 6. Non-transcribed pseudogenes have been designated on chromosomes 1, 15, 20, and Y. Alternative splicing results in multiple transcript variants.

抗原: Synthetic peptide of human CD24

经过测试的应用: ELISA, WB, IHC

推荐稀释比: IHC: 50-100;WB: 200-1000;ELISA: 5000-10000

种属反应性: Rabbit

克隆性: Rabbit Polyclonal

亚型: Immunogen-specific rabbit IgG

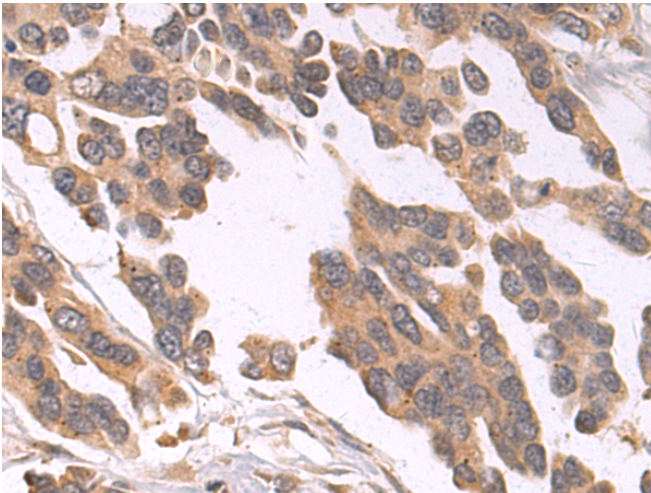
纯化: Antigen affinity purification

种属反应性: Human

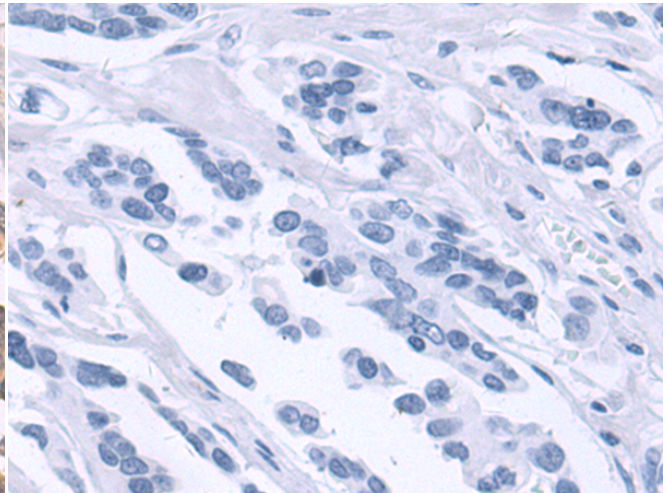
成分: PBS (without Mg²⁺ and Ca²⁺), pH 7.4, 150 mM NaCl, 0.05% Sodium Azide and 40% glycerol

研究领域: Cancer, Cardiovascular, Metabolism, Neuroscience, Immunology, Stem Cells

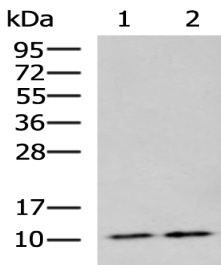
储存和运输: Store at -20°C. Avoid repeated freezing and thawing



Immunohistochemistry analysis of paraffin embedded Human colorectal cancer tissue using 220432(CD24 Antibody) at a dilution of 1/50(Cytoplasm).



In comparison with the IHC on the left, the same paraffin-embedded Human colorectal cancer tissue is first treated with the synthetic peptide and then with 220432(Anti-CD24 Antibody) at dilution 1/50.



Gel: 12%SDS-PAGE, Lysate: 40 µg;

Lane 1-2: Raji and LOVO cell lysates;

Primary antibody: 220432(CD24 Antibody) at dilution 1/400;

Secondary antibody: HRP-conjugated Goat anti rabbit IgG at 1/5000 dilution;

Exposure time: 5 minutes