

CD226 RABBIT PAB

货号: S220109

产品全名: CD226 兔多抗

基因符号: PTA1; DNAM1; DNAM-1; TLI5A1

UNIPROT ID: Q15762 (Gene Accession - NP_006557)

背景: This gene encodes a glycoprotein expressed on the surface of NK cells, platelets, monocytes and a subset of T cells. It is a member of the Ig-superfamily containing 2 Ig-like domains of the V-set. The protein mediates cellular adhesion of platelets and megakaryocytic cells to vascular endothelial cells. The protein also plays a role in megakaryocytic cell maturation.

抗原: Synthetic peptide of human CD226

经过测试的应用: ELISA, IHC

推荐稀释比: IHC: 50-200; ELISA: 2000-5000

种属反应性: Rabbit

克隆性: Rabbit Polyclonal

亚型: Immunogen-specific rabbit IgG

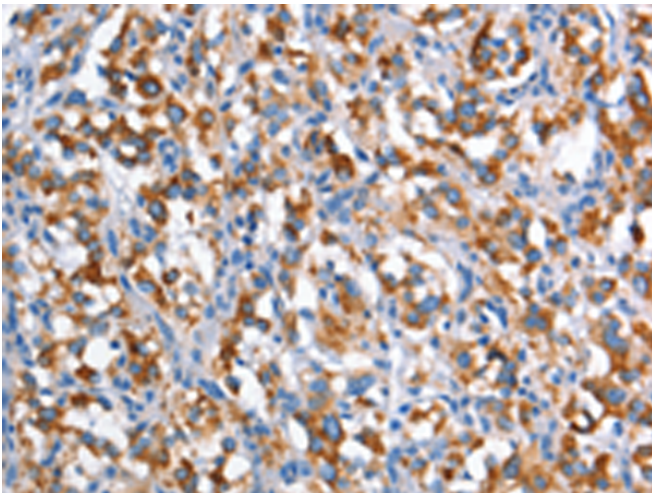
纯化: Antigen affinity purification

种属反应性: Human

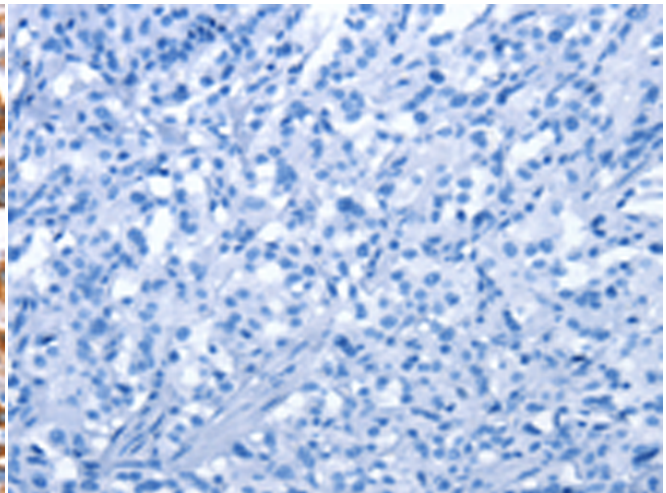
成分: PBS (without Mg²⁺ and Ca²⁺), pH 7.4, 150 mM NaCl, 0.05% Sodium Azide and 40% glycerol

研究领域: Immunology

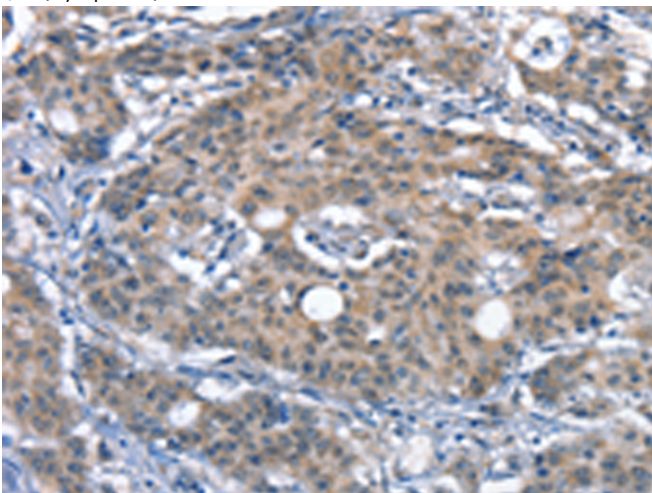
储存和运输: Store at -20°C. Avoid repeated freezing and thawing



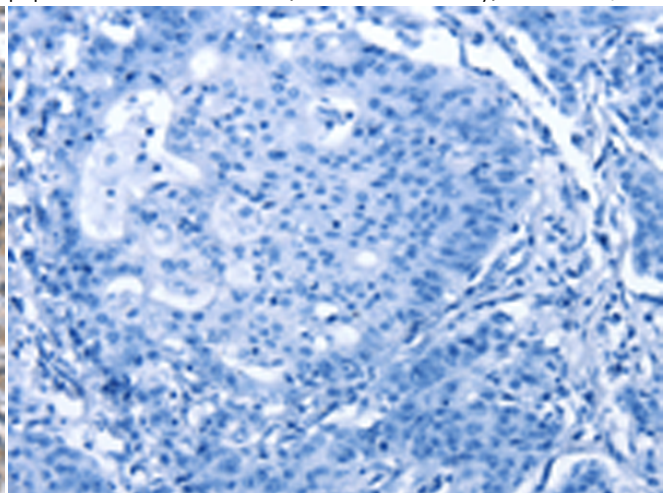
Immunohistochemistry analysis of paraffin embedded Human thyroid cancer tissue using 220109 (CD226 Antibody) at a dilution of 1/60 (Cytoplasm).



In comparison with the IHC on the left, the same paraffin-embedded Human thyroid cancer tissue is first treated with the synthetic peptide and then with 220109 (Anti-CD226 Antibody) at dilution 1/60.



The image on the left is immunohistochemistry of paraffin-embedded Human gastric cancer tissue using 220109 (Anti-CD226 Antibody) at a dilution of 1/60.



In comparison with the IHC on the left, the same paraffin-embedded Human gastric cancer tissue is first treated with synthetic peptide and then with D260970 (Anti-CD226 Antibody) at dilution 1/60.



Product Description

Pioneering GTPase and Oncogene Product Development since 2010
