

CD1E RABBIT PAB

货号: N225030

产品全名: CD1E 兔多抗

基因符号 CD1E; T-cell surface glycoprotein CD1e; membrane-associated; hCD1e; R2G1; CD1e

UNIPROT ID: P15812

背景: T-cell surface glycoprotein CD1e, soluble binds diacetylated lipids, including phosphatidyl inositides and diacylated sulfoglycolipids, and is required for the presentation of glycolipid antigens on the cell surface.

抗原: The antiserum was produced against synthesized peptide derived from the C-terminal region of human CD1E. AA range:321-370

经过测试的应用: WB,IHC-P,ELISA

推荐稀释比: WB: 1/500-1/1000 IHC: 1/50-1/100 ELISA: 1/10000

种属反应性: Rabbit

克隆性: Rabbit Polyclonal

分子量: Calculated MW: 44 kDa; Observed MW: 44 kDa

亚型: IgG

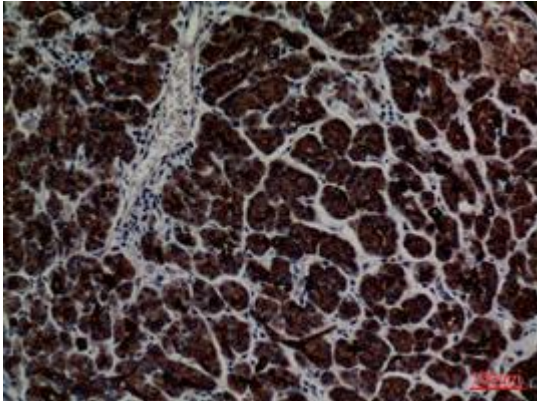
纯化: Affinity Purified

种属反应性: Human

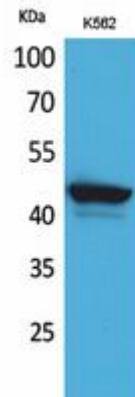
成分: PBS (without Mg²⁺ and Ca²⁺), pH 7.3 containing 50% glycerol, 0.5% BSA and 0.02% sodium azide

研究领域: Immunology

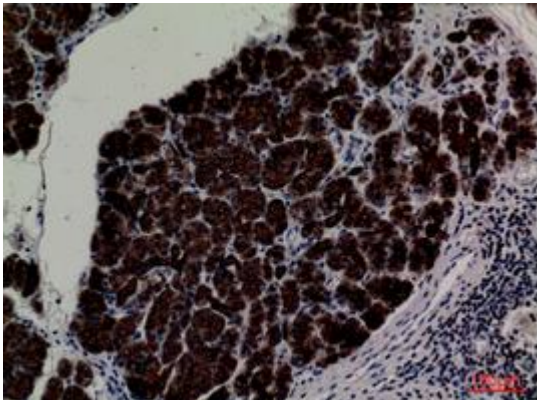
储存和运输: Store at -20°C. Avoid repeated freezing and thawing



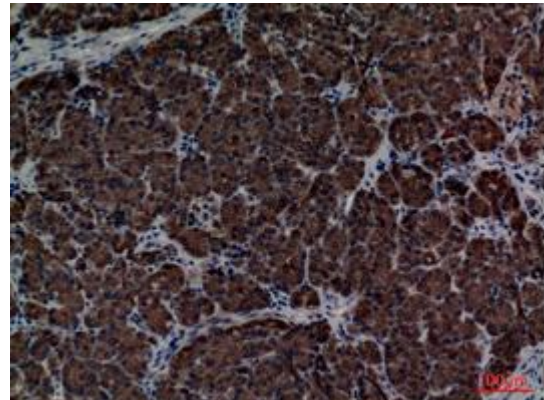
Immunohistochemistry analysis of paraffin-embedded Human pancreas using CD1E antibody. High-pressure and temperature Sodium Citrate pH 6.0 was used for antigen retrieval.



Western blot analysis of CD1E in K562 lysates using CD1E antibody.



Immunohistochemistry analysis of paraffin-embedded Human pancreas using CD1E antibody. High-pressure and temperature Sodium Citrate pH 6.0 was used for antigen retrieval.



Immunohistochemistry analysis of paraffin-embedded Human pancreas using CD1E antibody. High-pressure and temperature Sodium Citrate pH 6.0 was used for antigen retrieval.