

## CD1A/B RABBIT PAB

货号: N225146

产品全名: CD1a/b 兔多抗

基因符号 T-cell surface antigen T6/Leu-6; hTat thymocyte antigen; CD antigen CD1a; CD antigen CD1b

**UNIPROT ID:** P06126/P29016

背景: Antigen-presenting protein that binds self and non-self lipid and glycolipid antigens and presents them to T-cell receptors on natural killer T-cells.

抗原: Synthetic peptide from human protein at AA range: 220-270

经过测试的应用: IHC-P,ELISA

推荐稀释比: IHC: 1/50-1/100 ELISA: 1/10000

种属反应性: Rabbit

克隆性: Rabbit Polyclonal

分子量: -

亚型: IgG

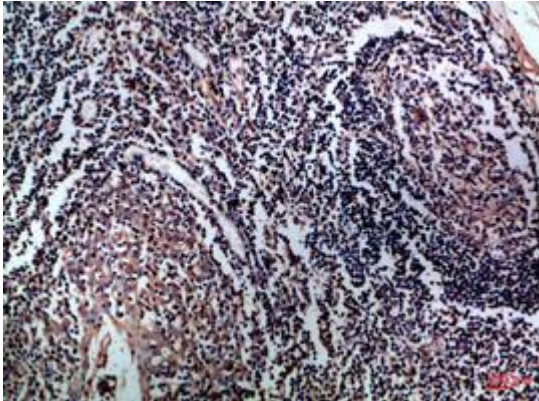
纯化: Affinity Purified

种属反应性: Human

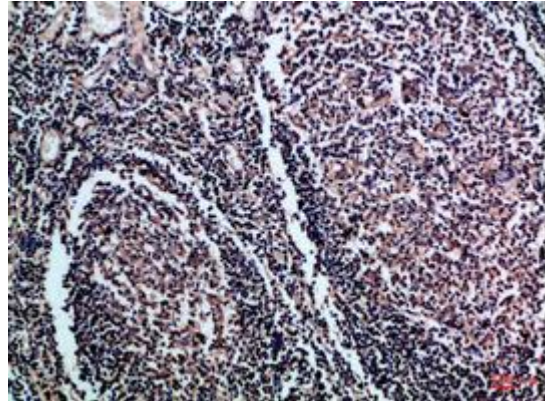
成分: PBS (without Mg<sup>2+</sup> and Ca<sup>2+</sup>), pH 7.3 containing 50% glycerol, 0.5% BSA and 0.02% sodium azide

研究领域: Immunology

储存和运输: Store at -20°C. Avoid repeated freezing and thawing



Immunohistochemical analysis of paraffin-embedded Human tonsils using CD1a/b antibody. High-pressure and temperature Sodium Citrate pH 6.0 was used for antigen retrieval.



Immunohistochemistry analysis of paraffin-embedded Human tonsil using CD1a/b antibody. High-pressure and temperature Sodium Citrate pH 6.0 was used for antigen retrieval.