

CD1A (4C3) MOUSE MAB

货号: N261289

产品全名: CD1a (4C3) 小鼠单抗

基因符号 CD1A; T-cell surface glycoprotein CD1a; T-cell surface antigen T6/Leu-6; hTa1 thymocyte antigen; CD antigen CD1a

UNIPROT ID: P06126

背景: Antigen-presenting protein that binds self and non-self lipid and glycolipid antigens and presents them to T-cell receptors on natural killer T-cells.

抗原: Synthetic peptide conjugated to KLH.

经过测试的应用: IHC-P

推荐稀释比: IHC: 1/50-1/100

种属反应性: Mouse

克隆性: Mouse Monoclonal

克隆编号: 4C3-9C8-6A10

分子量: -

亚型: IgG1

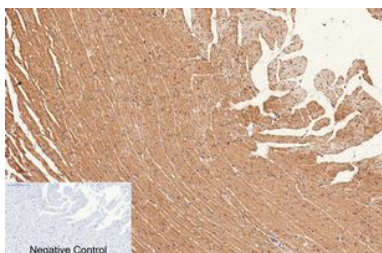
纯化: Affinity Purified

种属反应性: Human,Rat,Mouse

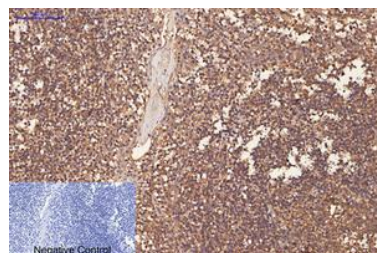
成分: PBS (without Mg²⁺ and Ca²⁺), pH 7.3 containing 50% glycerol, 0.5% BSA and 0.02% sodium azide

研究领域: Immunology

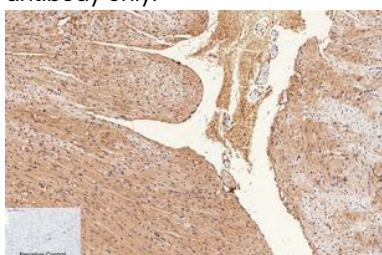
储存和运输: Store at -20°C. Avoid repeated freezing and thawing



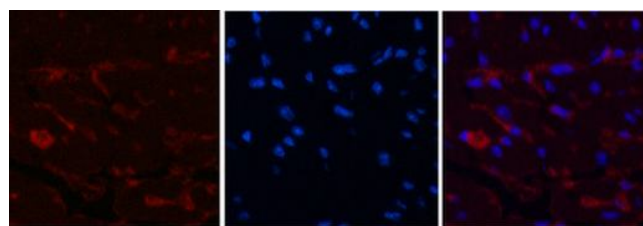
Immunohistochemical analysis of paraffin-embedded Human tonsils using CD1a (4C3) antibody. High-pressure and temperature Sodium Citrate pH 6.0 was used for antigen retrieval. Negative control was used by secondary antibody only.



Immunohistochemistry analysis of paraffin-embedded Human Tonsil tissue using CD1a (4C3) antibody. High-pressure and temperature Sodium Citrate pH 6.0 was used for antigen retrieval. Negative control was used by secondary antibody only.



Immunohistochemistry analysis of paraffin-embedded mouse heart tissue using CD1a antibody. High-pressure and temperature Sodium Citrate pH 6.0 was used for antigen retrieval. Negative control was used by secondary antibody only.



Immunofluorescence analysis of CD1a (4C3) in mouse heart tissue using CD1a (4C3) antibody (9H6) (red), and DAPI (blue).