

## CD166 RABBIT PAB

货号: N225913

产品全名: CD166 兔多抗

基因符号 ALCAM; MEMD; CD166 antigen; Activated leukocyte cell adhesion molecule; CD166

**UNIPROT ID:** Q13740

**背景:** Cell adhesion molecule that binds to CD6. Involved in neurite extension by neurons via heterophilic and homophilic interactions. May play a role in the binding of T- and B-cells to activated leukocytes, as well as in interactions between cells of the nervous system.

**抗原:** A synthesized peptide derived from human CD166

**经过测试的应用:** WB,IHC-P,ICC/IF,IP,FC

**推荐稀释比:** WB: 1/500-1/1000 IHC: 1/50-1/100 IF: 1/50-1/200 IP: 1/20 FC: 1/50-1/100

**种属反应性:** Rabbit

**克隆性:** Rabbit Polyclonal

**分子量:** Calculated MW: 65 kDa; Observed MW: 100 kDa

**亚型:** IgG

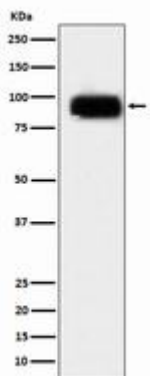
**纯化:** Affinity Chromatography

**种属反应性:** Human, Mouse and Rat

**成分:** PBS (without Mg<sup>2+</sup> and Ca<sup>2+</sup>), pH 7.3 containing 50% glycerol, 0.5% BSA and 0.02% sodium azide

**研究领域:** Immunology

**储存和运输:** Store at -20°C. Avoid repeated freezing and thawing



Western blot analysis of CD166 in Daudi lysates using CD166 antibody.



# Product Description

Pioneering GTPase and Oncogene Product Development since 2010

---