

## CD130 RABBIT PAB

货号: N226078

产品全名: CD130 兔多抗

基因符号 Interleukin-6 receptor subunit beta ,IL-6 receptor subunit beta,IL-6R subunit beta,IL-6R-beta, IL-6RB,CDw130

**UNIPROT ID:** P40189

**背景:** The receptor systems for IL6, LIF, OSM, CNTF, IL11, CTF1 and BSF3 can utilize IL6ST for initiating signal transmission. Binding of IL6 to IL6R induces IL6ST homodimerization and formation of a high-affinity receptor complex, which activates the intracellular JAK-MAPK and JAK-STAT3 signaling pathways.

**抗原:** A synthesized peptide derived from human CD130/gp130

**经过测试的应用:** WB,IHC-P

**推荐稀释比:** WB: 1/500-1/1000 IHC: 1/50-1/100

**种属反应性:** Rabbit

**克隆性:** Rabbit Polyclonal

**克隆编号:** [Clone ID]

**分子量:** Calculated MW: 104 kDa; Observed MW: 130-140kDa

**亚型:** IgG

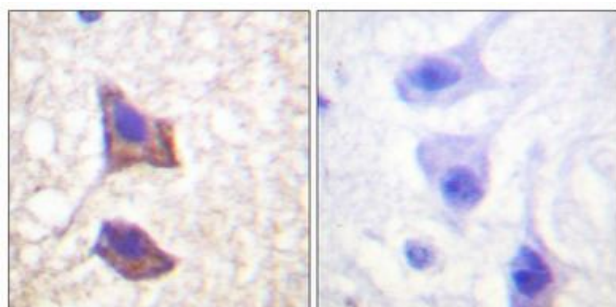
**纯化:** Affinity Purified

**种属反应性:** Human,Mouse

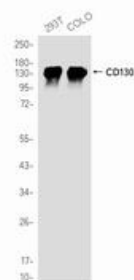
**成分:** PBS (without Mg<sup>2+</sup> and Ca<sup>2+</sup>), pH 7.3 containing 50% glycerol, 0.5% BSA and 0.02% sodium azide

**研究领域:** Cell Biology

**储存和运输:** Store at -20°C. Avoid repeated freezing and thawing



Immunohistochemistry analysis of paraffin-embedded human brain using CD130 antibody. High-pressure and temperature Sodium Citrate pH 6.0 was used for antigen retrieval. Sample with blocking peptide on the right.



Western blot analysis of CD130 in 293T, COLO lysates using CD130 antibody.