

CD11B RABBIT MAB

货号: N261739

产品全名: CD11b 兔单克隆抗体

基因符号 CD11 antigen-like family member B; CR-3 alpha chain; Cell surface glycoprotein MAC-1 subunit alpha; CD11b; Leukocyte adhesion receptor MO1

UNIPROT ID: P05555

背景: Integrin ITGAM/ITGB2 is implicated in various adhesive interactions of monocytes, macrophages and granulocytes as well as in mediating the uptake of complement-coated particles and pathogens.

抗原: A synthetic peptide of mouse CD11b

经过测试的应用: WB,IP

推荐稀释比: WB: 1/500-1/1000 IP: 1/20

种属反应性: Rabbit

克隆性: Rabbit Monoclonal

克隆编号: R01-3F9

分子量: Calculated MW: 127 kDa; Observed MW: 170 kDa

亚型: IgG

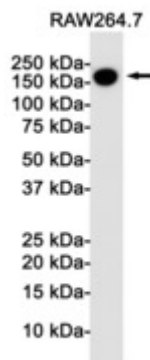
纯化: Affinity Purified

种属反应性: Mouse

成分: PBS (without Mg²⁺ and Ca²⁺), pH 7.3 containing 50% glycerol, 0.5% BSA and 0.02% sodium azide

研究领域: Neuroscience&Microglia

储存和运输: Store at -20°C. Avoid repeated freezing and thawing



Western blot analysis of CD11b in Raw264.7 lysates using CD11b antibody.



Product Description

Pioneering GTPase and Oncogene Product Development since 2010
