

CD109 RABBIT PAB

货号: S213856

产品全名: CD109 兔多抗

基因符号: CPAMD7; RPI1-525G3.1

UNIPROT ID: Q6YHK3 (Gene Accession - NP_001153059)

背景: This gene encodes a member of the alpha2-macroglobulin/complement superfamily. The encoded GPI-linked glycoprotein is found on the cell surface of platelets, activated T-cells, and endothelial cells. The protein binds to and negatively regulates signaling of transforming growth factor beta (TGF-beta). Multiple transcript variants encoding different isoforms have been found for this gene.

抗原: Synthetic peptide of human CD109

经过测试的应用: ELISA, IHC

推荐稀释比: IHC: 25-100; ELISA: 2000-5000

种属反应性: Rabbit

克隆性: Rabbit Polyclonal

亚型: Immunogen-specific rabbit IgG

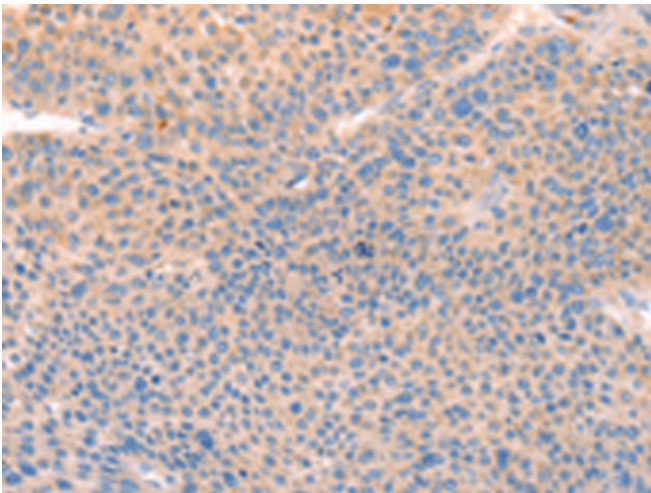
纯化: Antigen affinity purification

种属反应性: Human

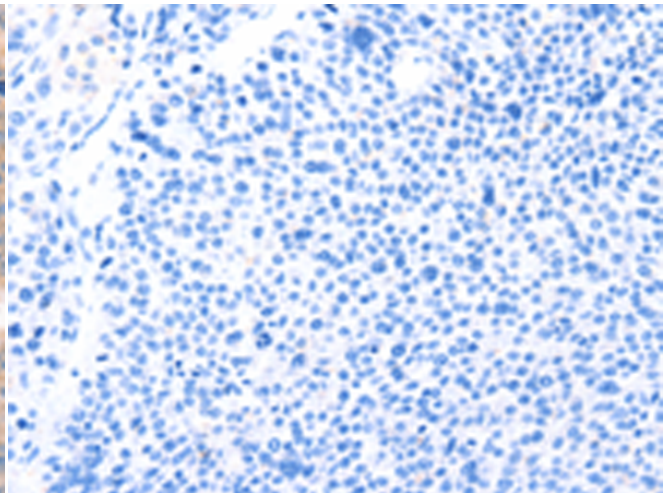
成分: PBS (without Mg²⁺ and Ca²⁺), pH 7.4, 150 mM NaCl, 0.05% Sodium Azide and 40% glycerol

研究领域: Immunology

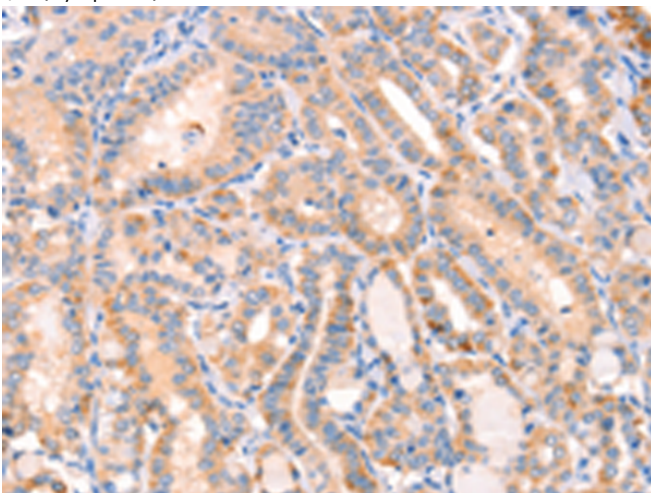
储存和运输: Store at -20°C. Avoid repeated freezing and thawing



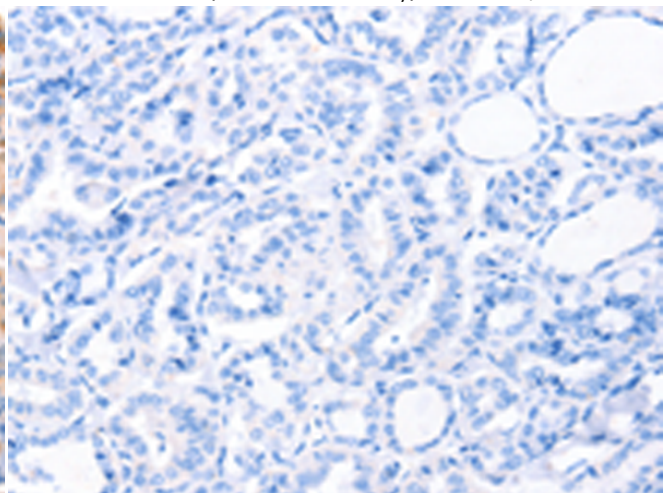
Immunohistochemistry analysis of paraffin embedded Human liver cancer tissue using 213856(CD109 Antibody) at a dilution of 1/30(Cytoplasm).



In comparison with the IHC on the left, the same paraffin-embedded Human liver cancer tissue is first treated with the synthetic peptide and then with 213856(Anti-CD109 Antibody) at dilution 1/30.



The image on the left is immunohistochemistry of paraffin-embedded Human thyroid cancer tissue using 213856(Anti-CD109 Antibody) at a dilution of 1/30.



In comparison with the IHC on the left, the same paraffin-embedded Human thyroid cancer tissue is first treated with synthetic peptide and then with D160961(Anti-CD109 Antibody) at dilution 1/30.



Product Description

Pioneering GTPase and Oncogene Product Development since 2010
